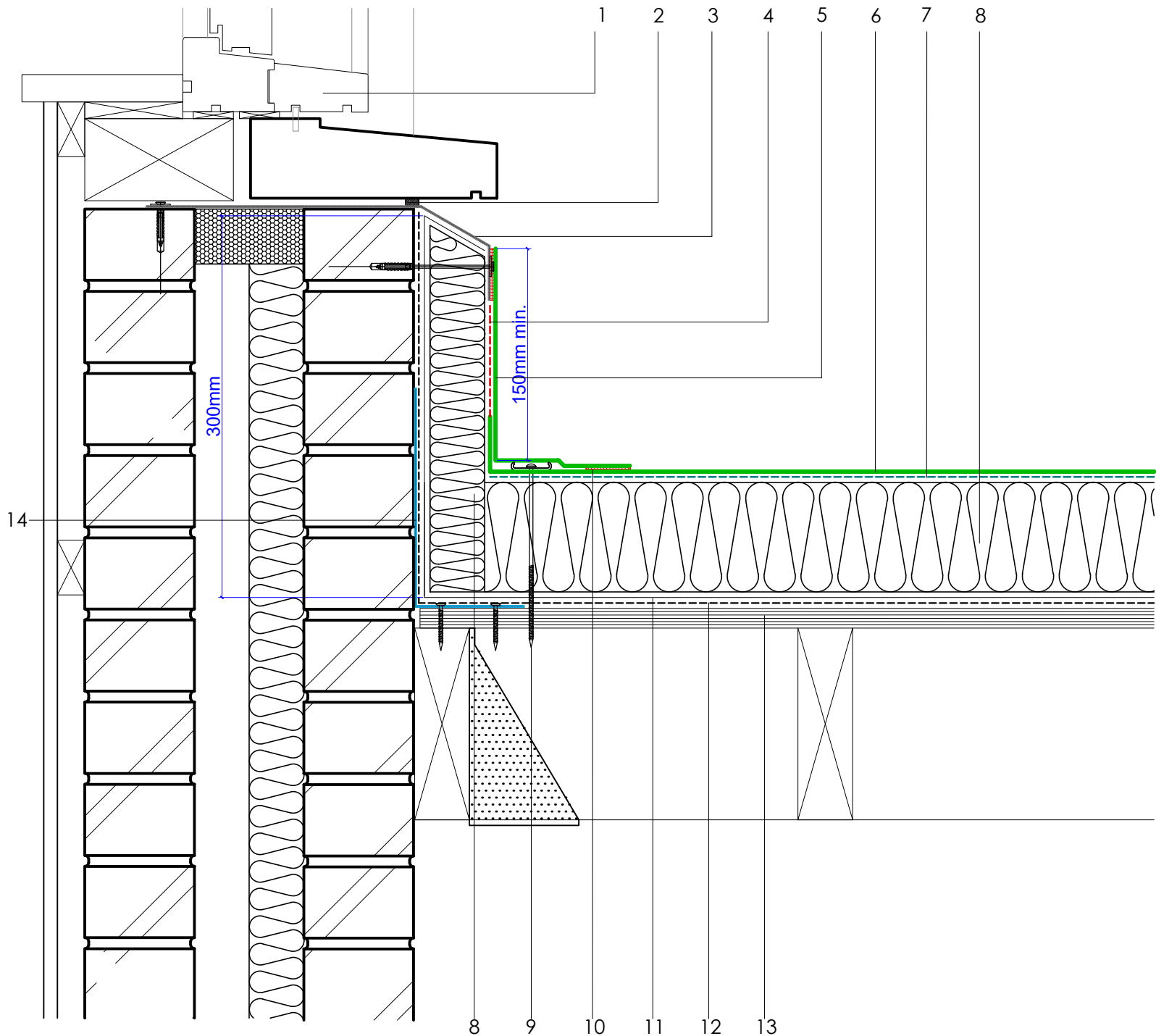


1	Window/Door joinery by others
2	ECOFLEX® sealant
3	ECOMETAL® preformed PVC coated metal trim mechanical (C) fixing at 200mm ctrs
4	FM/D contact adhesive
5	ECOFLEX® FM single ply membrane
6	ECOFLEX® ADH fleeceback single ply membrane fully bonded using ADH adhesive
7	ADH adhesive
8	HYTHERM® ADH tapered / flat board insulation fully bonded using Hyra-Stik EVO adhesive (thickness to achieve design U-value and/or minimum 1:40 design fall)
9	Restraint bar and mechanical (C) fixing
10	Heat welded seam - 40mm
11	ECOFLEX® air & vapour control layer (AVCL)
12	Vernis Antac ST primer
13	Plywood roof deck by specialist contractor
14	Galvanised bent metal angle mechanically fixed at perimeter (by specialist subcontractor)



www.axterhd.co.uk
info@axterhd.co.uk
01473 724056

Axter Ltd.
West Road, Ransomes European,
Ipswich, Suffolk, IP3 9SX

Axter provide detail drawings as part of our technical design service. Such drawings should only be used as a guide during the design process and should not be utilised during construction. Axter accepts no liability for misuse of this service.

PROJECT : N/A

CLIENT : N/A

DRAWING : ECOFLEX® ADH TYPICAL INSULATED SKIRTING UPSTAND TO DOOR/WINDOW CILL DETAIL

DWG.No
WR.P.EF.adh.21

SCALE
1:5 @ A4

DATE
2019

REV (if applicable)
N/A

STANDARD DETAIL

Ef

Ecoflex