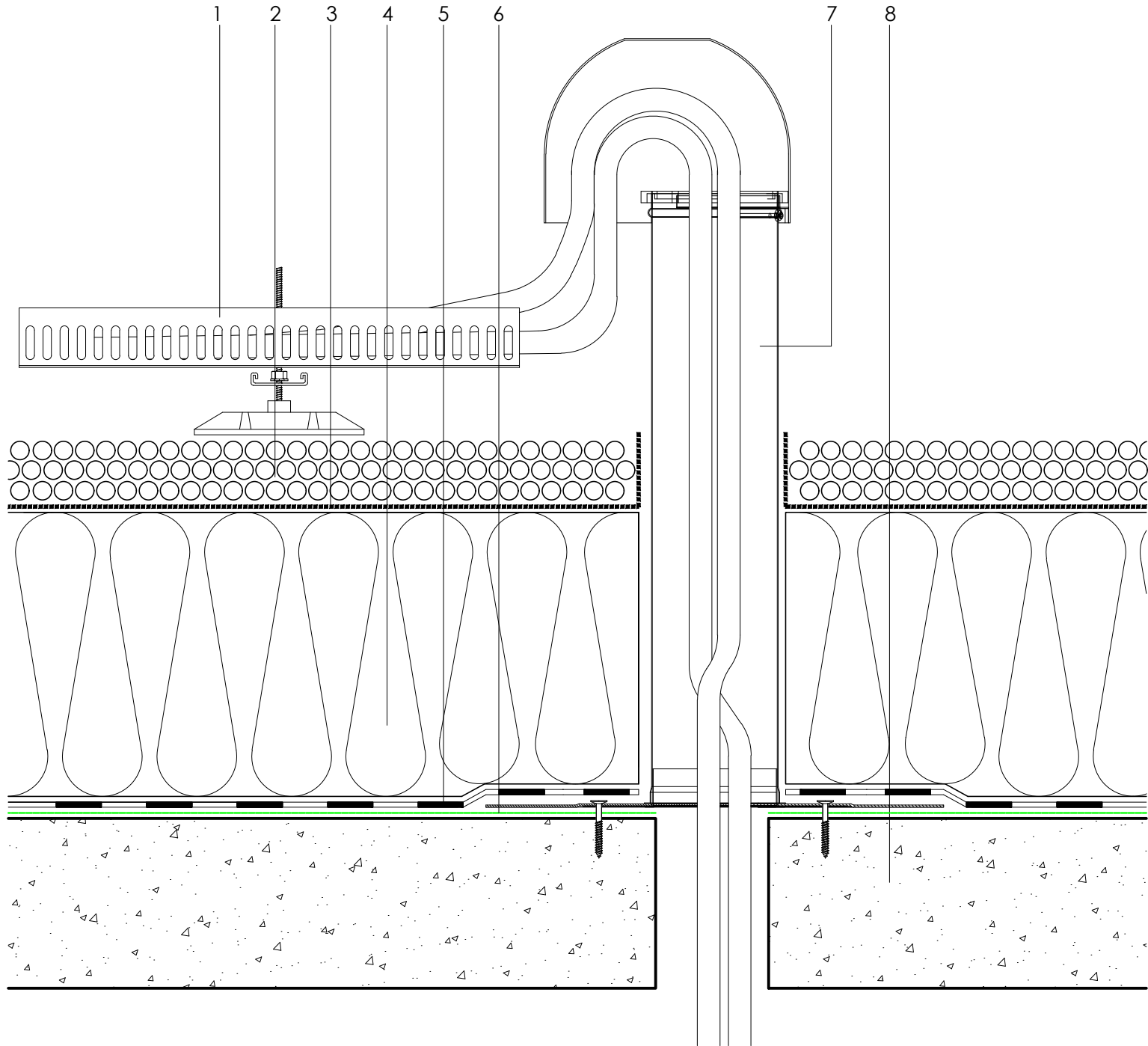


Axter provide detail drawings as part of our technical design service. Such drawings should only be used as a guide during the design process and should not be utilised during construction. Axter accepts no liability for misuse of this service.

1	Cable tray by specialist contractor
2	40mm - 60mm river washed gravel ballast (no fines) minimum 85kg/m
3	AXTER® water reducing membrane
4	AXTER® inverted roof insulation system to achieve the required design U-Value
5	FORCE® 4000 DALLE
6	Vernis Seal primer (100 to 150 g/m²)
7	AXTER® prefabricated cable penetration unit
8	Concrete roof slab by specialist contractor laid to zero fall (roof with a slope which lies between 0 and 1:80)



PROJECT : N/A

CLIENT : N/A

DRAWING : FORCE DALLE® TYPICAL PREFABRICATED
CABLE PENETRATION DETAIL

DWG.No
FD.C.0516.180.Bal

SCALE
1:5 @ A4

DATE
2019

REV (if applicable)
N/A

STANDARD DETAIL

F.d

Force Dalle