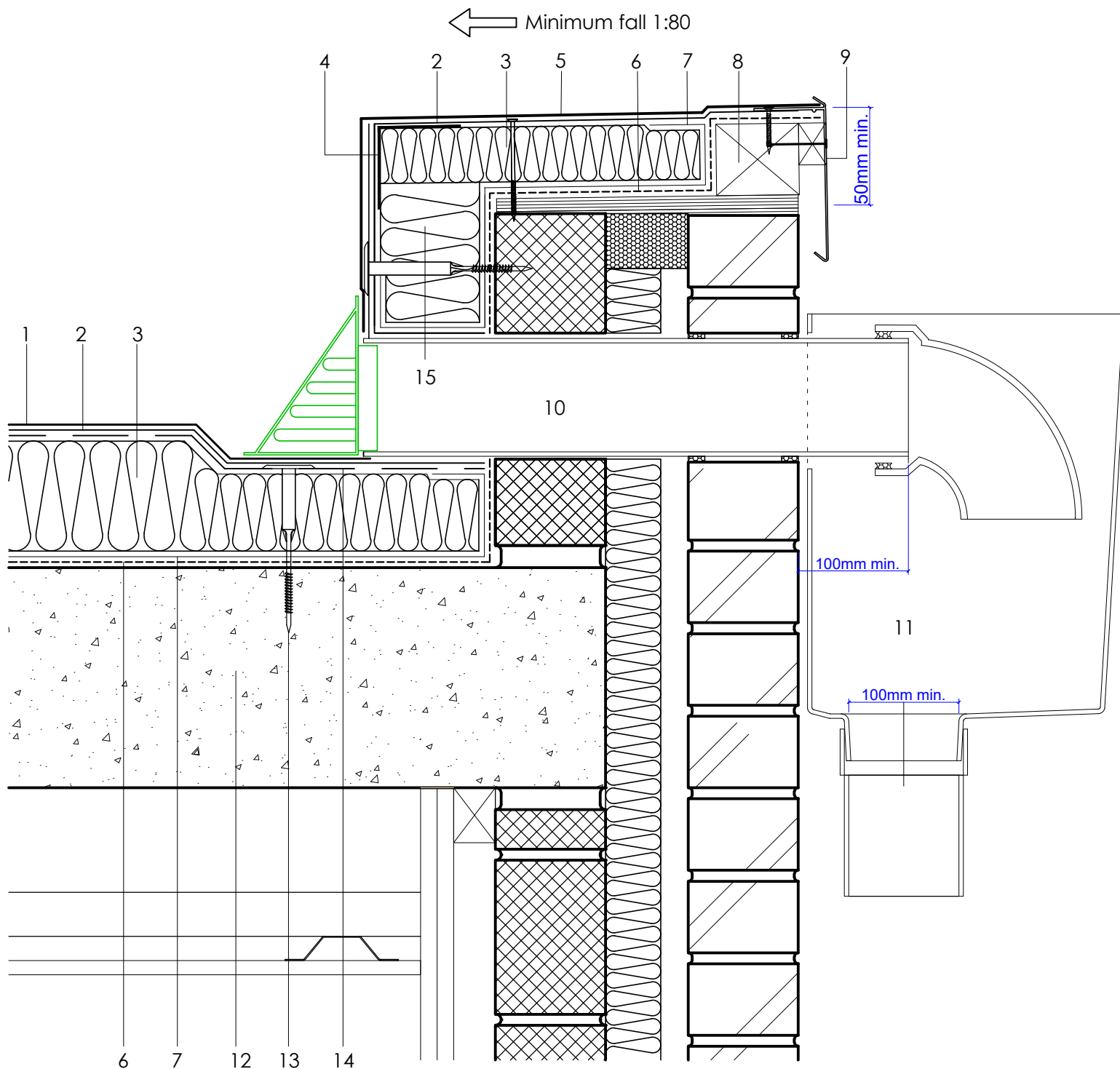


1	FORCE® LINE Capping Sheet
2	FORCE® LINE under-layer
3	HYTHERM® ADH tapered/flat board Insulation (thickness to achieve design U-value and/or design fall)
4	Metal support angle
5	FORCE® LINE Detail Membrane
6	FORCE® PRIME
7	FORCE® LINE air & vapour control layer (AVCL)
8	Timber hard edge
9	AXTRIM® perimeter trim (to suit design requirements)
10	AXTER® SF 110 parapet outlet - leaf guard to suit with extension pipe as required to suit parapet width - dimensions to be taken on site (90° downturn hopper)
11	Hopper (by specialist contractor)
12	Concrete roof slab by specialist contractor
13	FORCE® LINE Tubular washer and mechanical (C) fastener
14	Thermecran perforated layer
15	HYTHERM® ADH upstand insulation to mitigate cold bridge



Axter provide detail drawings as part of our technical design service. Such drawings should only be used as a guide during the design process and should not be utilised during construction. Axter accepts no liability for misuse of this service.

PROJECT : N/A
CLIENT : N/A
DRAWING : FORCE® LINE TYPICAL PARAPET
RAINWATER OUTLET DETAIL

DWG.No
WR.C.FL.80

SCALE
1:5 @ A4

DATE
2019

REV (if applicable)

N/A

STANDARD DETAIL

F.I

Force Line