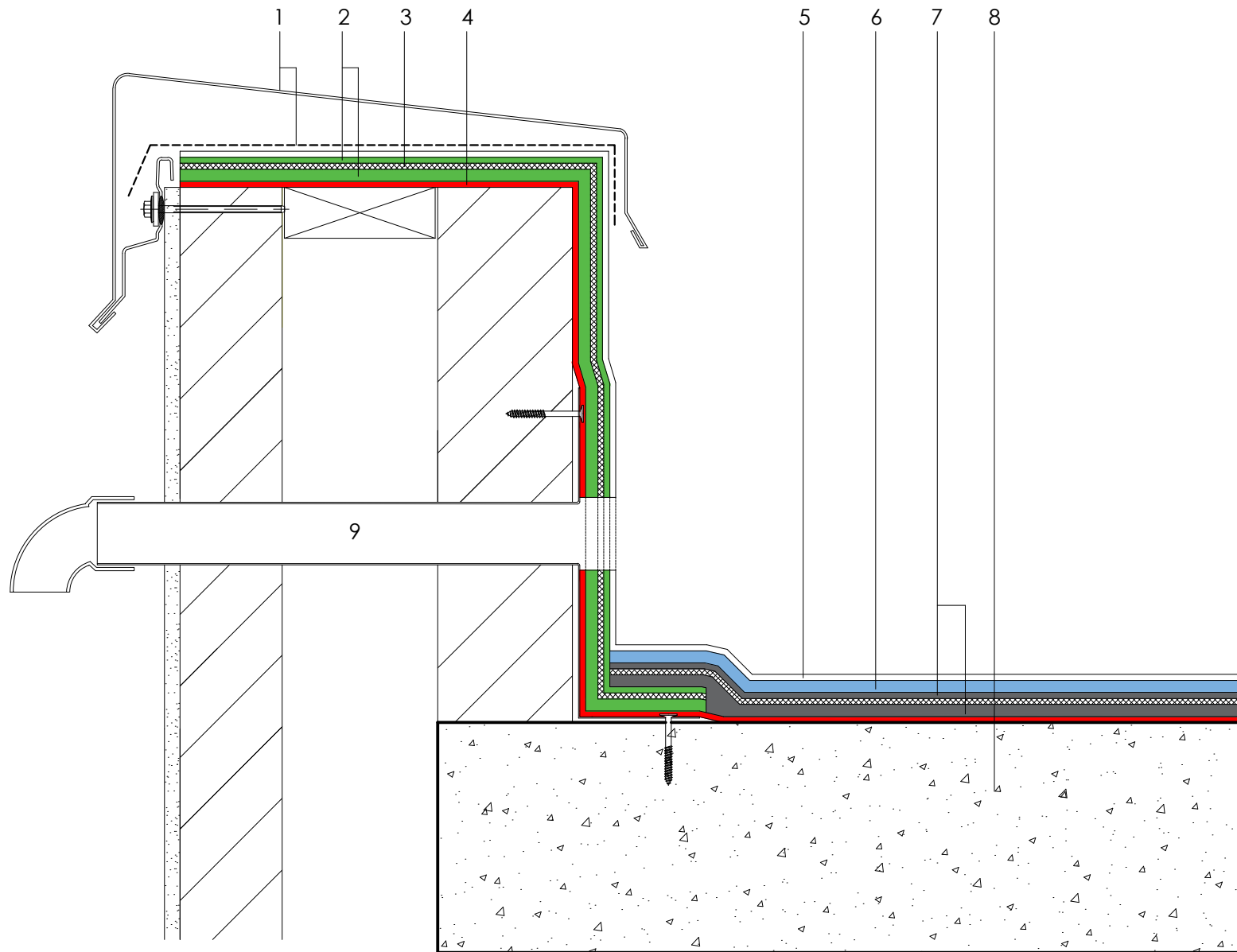


1	Metal capping laid on dpm by specialist contractor
2	Starcoat PMMA® Thix vertical waterproofing
3	Starcoat PMMA® fleece reinforcement
4	Starcoat PMMA® primer (if required) - refer to project specific specification
5	Starcoat PMMA® coloured or clear sealer (quartz aggregate or decorative chips optional)
6	Starcoat PMMA® self leveling mortar and aggregate
7	Starcoat PMMA® waterproofing
8	Generic substrate - refer to project specific specification
9	AXTER® SF 110 parapet outlet - AXTER® leaf guard to suit with extension pipe as required to suit parapet width - dimensions to be taken on site (90° downturn to hopper)



Axter provide detail drawings as part of our technical design service. Such drawings should only be used as a guide during the design process and should not be utilised during construction. Axter accepts no liability for misuse of this service.

PROJECT : N/A  
CLIENT : N/A  
DRAWING : STARCOAT PMMA® TYPICAL OVERFLOW  
PIPE DETAIL

DWG.No  
SPMMA.0816.150

SCALE  
1:5 @ A4

DATE  
2019

REV (if applicable)  
N/A

STANDARD DETAIL

S.p

Starcoat PMMA