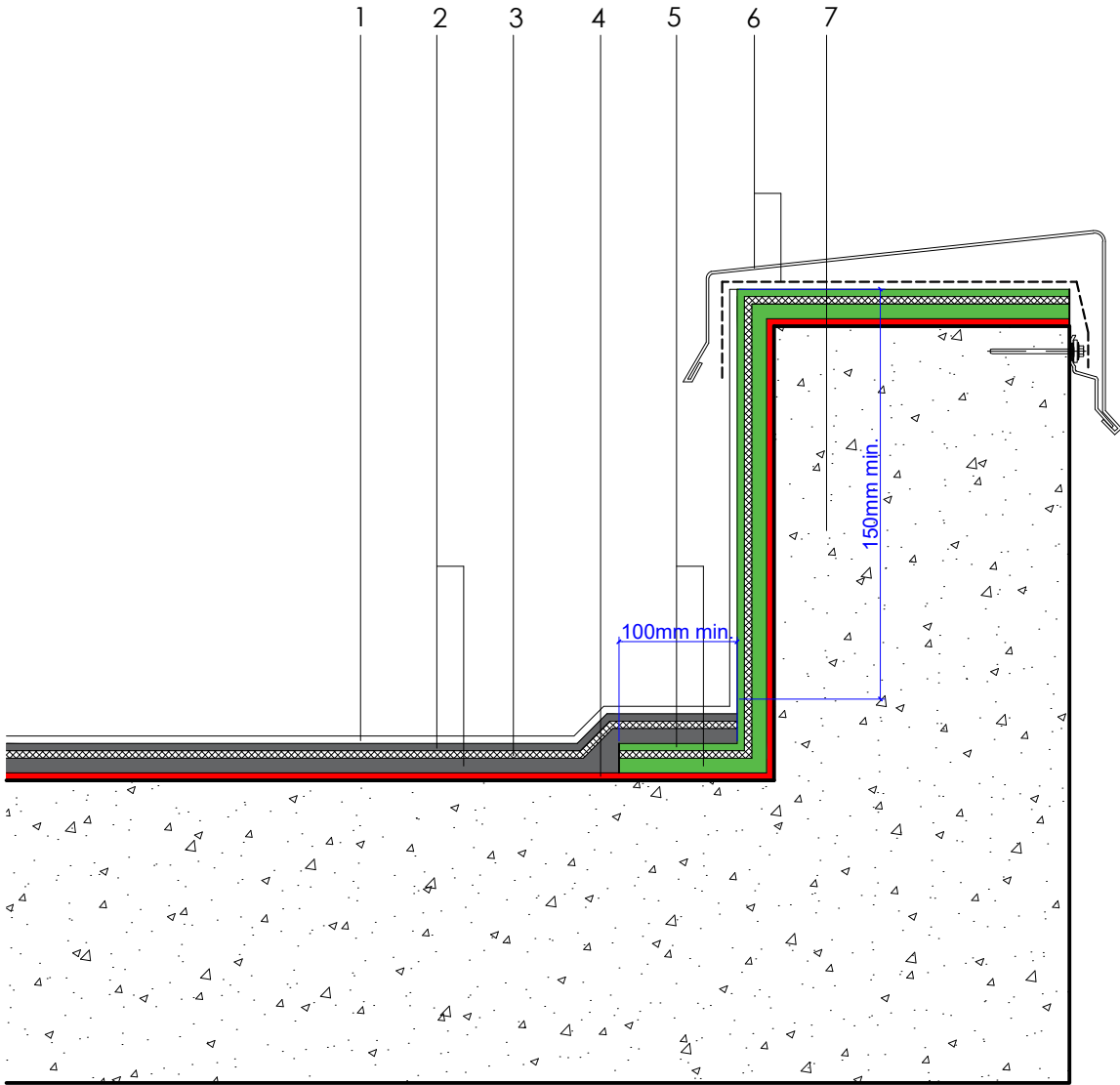


1	Starcoat PMMA [®] coloured or clear sealer (quartz aggregate or decorative chips optional)
2	Starcoat PMMA [®] waterproofing
3	Starcoat PMMA [®] fleece reinforcement
4	Starcoat PMMA [®] primer (if required) - refer to project specific specification
5	Starcoat PMMA [®] thix vertical waterproofing
6	Metal capping and DPM lapped and sealed by specialist contractor
7	Generic substrate - refer to project specific specification



Axter provide detail drawings as part of our technical design service. Such drawings should only be used as a guide during the design process and should not be utilised during construction. Axter accepts no liability for misuse of this service.

PROJECT : N/A

CLIENT : N/A

DRAWING : STARCOAT PMMA[®] TYPICAL UPSTAND TO SECRET FIXED CAPPING DETAIL (MEMBRANE BENEATH) (WEARING LAYER)

DWG.No

SPMMA.0816.60

SCALE

1:5 @ A4

DATE

2019

REV (if applicable)

N/A

STANDARD DETAIL

S.p

Starcoat PMMA