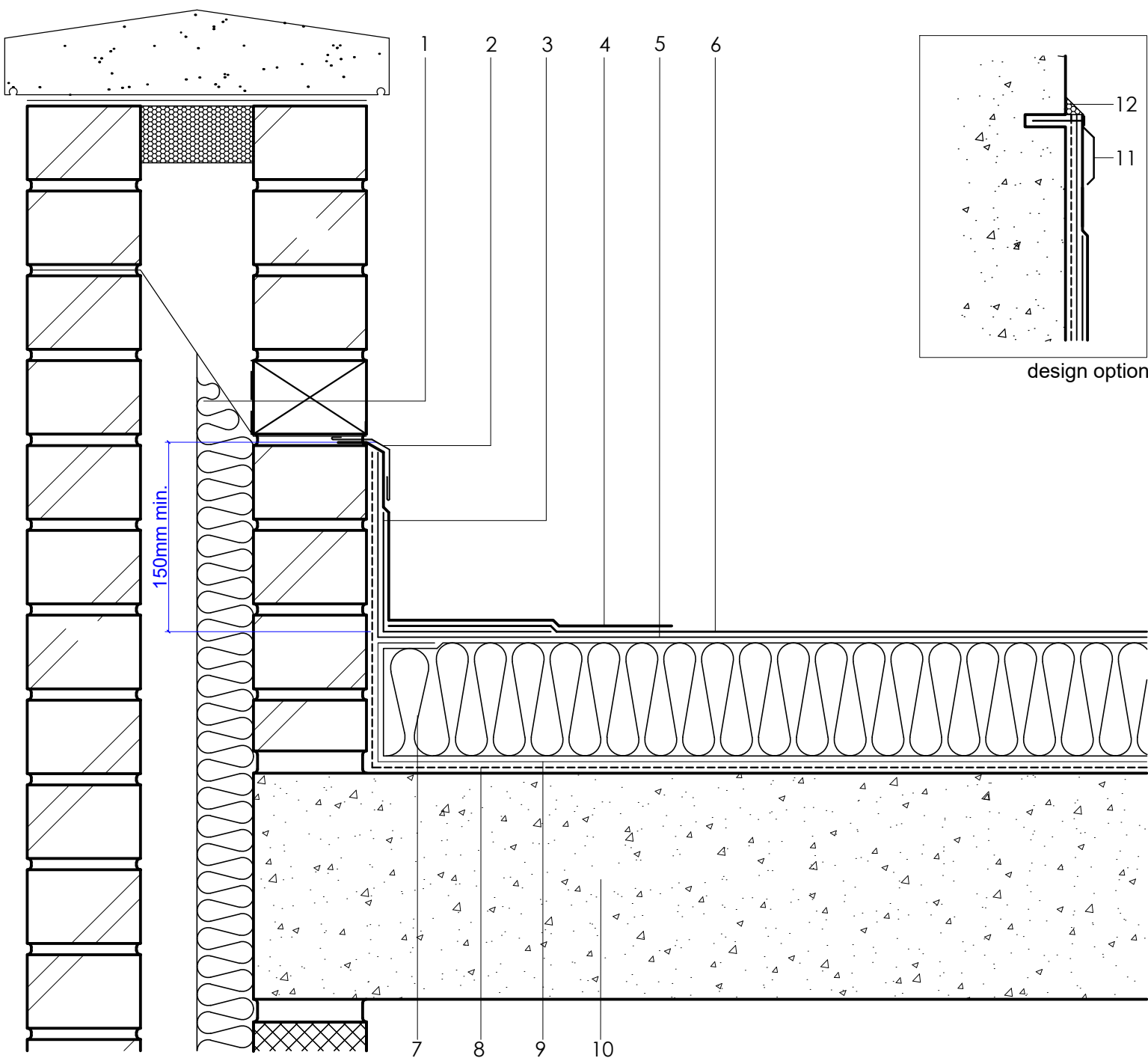


1	DPC/cavity tray/weep holes to drain internally or externally as specified
2	Soft metal flashing by others
3	35PY Angle Strip
4	FORCE 4000 S® Detail Membrane
5	HYRANGER® SPOT under-layer
6	FORCE 4000 S® Capping Sheet
7	HYTHERM® ADH tapered/flat board Insulation (thickness to achieve design U-value and/or design fall)
8	Vernis Antac ST primer
9	VAP ALU® ADH air & vapour control layer (AVCL)
10	Concrete roof slab by specialist contractor
11	AXTER® Termination Bar (design option) (to suit building construction)
12	AXTER® Bitumseal Sealant



www.axterhd.co.uk
info@axterhd.co.uk
01473 724056

Axter Ltd.
Weal Road, Ransomes European,
Ipswich, Suffolk, IP3 9SX

Axter provide detail drawings as part of our technical design service. Such drawings should only be used as a guide during the design process and should not be utilised during construction. Axter accepts no liability for misuse of this service.

PROJECT : N/A

CLIENT : N/A

DRAWING : FORCE 4000 S® TYPICAL SKIRTING
UPSTAND TO BRICK PARAPET DETAIL

DWG.No
WR.C.F4000.10

SCALE
1:5 @ A4

DATE
2019

REV (if applicable)
N/A

STANDARD DETAIL

F4000S

Force 4000 S