

Product Data Sheet

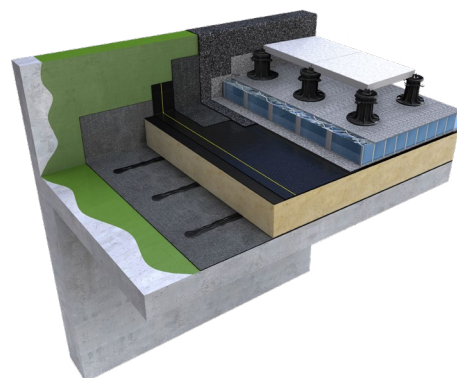
HYTHERM BF Insulation

Durable, lightweight PIR insulation for warm roofs (flat board or tapered)

Hytherm BF PIR insulation board is designed to provide optimum stability and structural integrity in warm roof constructions with hot applied bitumen waterproofing systems, including torch-on, and bitumen compatible single-ply systems.

The board comprises a fibre-free, rigid polyisocyanurate (PIR) core with a coated glass tissue facing on one side and bitumen glass tissue with polypropylene fleece on the other.

Hytherm BF is available in both flat and tapered boards, for use on new roofs, refurbished roofs or for upgrading the thermal performance of existing roofs.



Key benefits

- Lightweight, moisture tolerant board
- Excellent thermal performance - 0.026 W/mK lambda (dependent on thickness)
- Compression strength >150kPa at 10% compression
- Manufactured to ISO 14001 and ISO 9001

- Easy handling and installation
- Board size: 1200mm x 600mm; thicknesses available 25 mm -140 mm
- Environmental performance, GWP < 5, ODP zero
- 2008 Green Guide Summary Rating of A as certified by the BRE
- BBA approved

Dimensions

	Flat Boards	Tapered boards
Width	600mm	Tapered scheme details are confirmed on a project by project basis
Length	1200mm	
Thickness	25/50/60/70/80/90/100/110/120/130/140mm*	
Area	0.72 m ²	

*Greater thicknesses of insulation may be achieved with two layers of insulation boards.

Roof waterproofing system

Hytherm BF is suitable for use with most hot-applied and pour and roll bitumen waterproofing membranes, mastic asphalt and fully bonded single ply systems. When using single ply membranes, Hytherm BF should be installed fleece side down.

Thermal Conductivity

Thickness (mm)	Thermal conductivity / (W·m ⁻¹ ·K ⁻¹)
<80	0.027 W/m.K
80 to 120	0.025 W/m.K
≥120	0.024 W/m.K

The given U-values are indicative only. The effect of fixings has been assumed to have had no effect on the U-value. For comprehensive calculations on all deck types, please contact Axter Ltd. *Thermal conductivity is dependent on facings and product thickness

Compressive Strength

Typically exceeds **150 kPa at 10%** compressions when tested to BS EN 826 Thermal insulating products for building applications. Determination of compressive behaviour.

Resistance to Solvents

Hytherm BF resists attack from alkalis, dilutes acids, mineral oil and petrol. The insulation core is not resistant to ketonic solvents. Damaged boards should not be used.

Durability

PIR insulation is rot proof and durable, stable (will not sag or shrink), resists attack by mould and microbial growth and will not provide any food value to vermin. It will remain effective as an insulation system for at least the lifetime of the waterproof covering.

Durability is dependent on the application method, the supporting structure and conditions of use.

Environmental

The insulation core of Hytherm BF is manufactured with a blowing agent that is CFC / HCFC free, zero ODP and <5 GWP. Hytherm BF has a 2008 Green Guide Summary Rating of A as certified by BRE, and is manufactured to ISO 1400 and ISO 9001.

Fire Performance

The fire rating of any roof containing Hytherm insulation boards will depend heavily on the type of deck and waterproofing system installed. The designation of the roof covering must meet or satisfy the requirements of national Building Regulations.

For further details, contact Axter Ltd.

Roof loading

Hytherm BF is suitable for roof decks exposed to limited maintenance foot traffic, depending on the waterproofing system being used. A walkway should be provided on a roof where there is regular pedestrian access. The roof should be boarded out with protective boarding whenever site work is to take place after the roofboard has been laid and the roof made watertight.

Design considerations

Consideration should also be given to BS 5250:2021 Code of Practice for control of condensation in buildings and BS 6229: 2018 Flat roofs with continuously supported flexible waterproof coverings – Code of Practice.

Standards and Approvals

BBA approved

Manufactured to ISO 14001, ISO 9001

Wind loading

Wind loads should be assessed in accordance with BS EN 1991-1-4:2005 + A1: Eurocode 1, Actions on structures, General Actions, Wind Actions and the UK national Annex. For information on wind uplift calculations please call Axter.

The manufacturer reserves the right without prior notice to modify the composition of this product. Characteristics provided in this publication derive from data obtained under controlled test conditions. Axter Ltd makes no warranties, express or implied, as to the properties and performance under any variations from such conditions in actual construction.