

Product Data Sheet

E-STEP WALKWAY MAT

Accessories

Slip resistant mat to provide safe access for flat roof maintenance and to designate frequently accessed areas on Ecoflex PVC roofs.

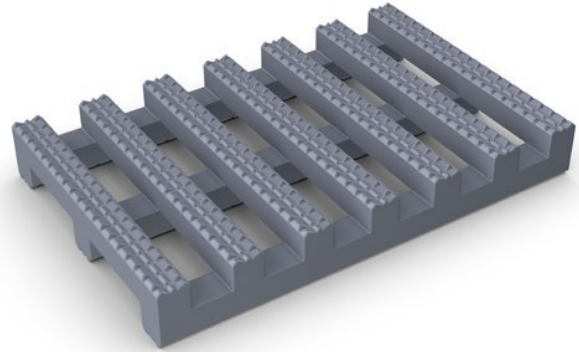
E-Step Walkway Mat is specially engineered for roof walkways. It is a two-layer matting that protects the PVC roof membrane and provides safe rooftop access. It is made from non-porous PVC with cross directional top ribs and a 'diamond cut' surface for a firm underfoot grip.

E-Step Walkway Mat carries a high R10 slip resistant rating under DIN 51130.

It is impermeable in all weathers and when laid flat will remain stable in winds up to 60mph / 96km/h.

Key benefits

- Certified slip resistance DIN 51130: R10 ASTM 1677: 1.0/0.9.
- Compatible with PVC and RBM roof membranes.
- Roof membrane protection.
- Excellent drainage DIN 51130: V10.
- Fast installation – loose lay, no fixing required.
- Contours to roof structure.
- Robust and long-lasting.



Features

- Durable one-piece construction.
- Diamond cut pattern.
- Supplied in 10m rolls.
- Made from flexible PVC.
- Stable in winds up to 60mph (96km/h).
- UV resistant.

Standard Sizes and Colours

Colours	Available in light grey and black. Other colours available on request.
Standard roll options	10 x 0.6m / 10 x 0.91m / 10 x 1.22m
Height	14mm
Weight	6.6kg/m ²

General

Appearance	Diamond-cut pattern with cross-directional top ribs.
Durability	One-piece welded construction for long life and minimal maintenance.
Installation	Loose laid. PVC ramp edging available in 6cm and 10cm widths. When loose laid, E-step is effective for winds up to 60mph (96km/h).
Workability	Flexible; easy to cut and shape on site. Supplied in rolls with top ribs facing outwards. Requires inverting once rolled out prior to use.

Technical Data

Acoustic	Excellent sound absorption properties.
Chemical	Resistant to most acids, alkalines and oils.
Composition	Flexible Polyvinyl Chloride (PVC).
Environment	Black colour is manufactured with post-industrial recycled material. Recycled content averages at least 30% but 100% is the objective where possible. E-Step does not use any substances currently included in the SVHC list under REACH in any matting products. E-Step is 100% recyclable.
Fire	EN ISO 13501-1:20007 – Cfl-SI.
Hygiene	Non-porous 100% PVC. Inhibits growth of bacteria.
Reversion	Thermoplastic shrinkage can result in size reductions up to 2%. Accelerated in hot environments.
Slip resistance	ASTM F 1677 – Dry/Wet: 1.0 / 0.9
	DIN 51130: R10, V10
Thermal	Functional -23°C - +60°C (slight size variation may occur at temperature extremes).
Uv light	Resistance to PVC degradation.
Wind resistance	When loose laid, E-Step is effective for winds up to 60mph (96km/h). In laboratory conditions on a flat, stable platform, the product has remained stable in wind speeds up to 94mph.

For information on ancillary products (edging strip, connector clips, snap track, hooks), please contact Axter Ltd.

Axter Ltd reserves the right to modify and update this data at any time without prior notice. Only the latest version of this document is valid, available for download at www.axter.co.uk/downloads. Once downloaded, documents are uncontrolled. Users should always confirm they are referring to the latest version prior to use. Further assistance is available from Axter Ltd's Technical Support Team, email: technical@axterltd.co.uk, telephone: 01473 935008.

The intended use of this product should be verified with Axter Ltd prior to adoption to ensure its suitability and compliance with specifications, project requirements, industry regulations, legislation, good practice, installation techniques and all other relevant guidance. Axter Ltd accepts no liability for non-compliant use of this product.