

Product Data Sheet

PERFORATED ALUMINIUM RETAINING ANGLE

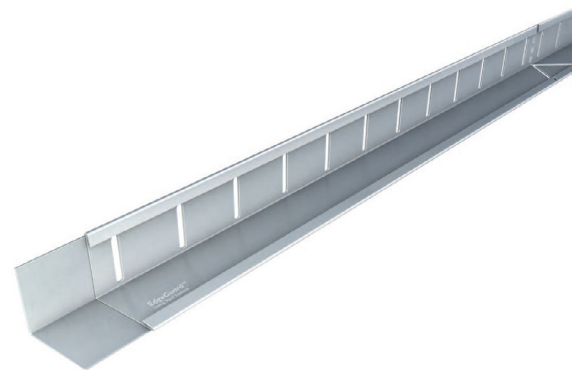
Accessories

Edge restraint for living and ballasted roofs.

Axter's Perforated Aluminium Retaining Angle is designed for use in living or ballasted roof applications either as an edge restraint, to preserve the integrity of fire breaks or where a solution for retaining or separating different living roof materials is required.

Key benefits

- Supplied in 2.4m lengths for speedy installation.
- Lightweight and robust.
- Unique and versatile connection system.
- Can be cut to length and angled to suit roof design.
- Available in a range of heights from 50mm to 300mm.
- Connectors not normally required.
- Manufactured from lightweight and robust aluminium.
- Bespoke powder-coated colouring available.



Product dimensions

Description	Height (mm)	Width of base (mm)	Material thickness (mm)	Section length (mm)
Aluminium, pre-punched and profiled	50	100	1.2	2400
	75	100	1.2	
	100	100	1.2	
	120	100	1.2	
	150	150	1.2	
	200	150	1.5	
	250	200	1.5	
	300	200	1.5	

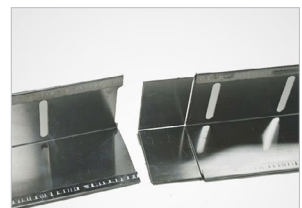
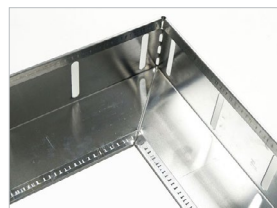
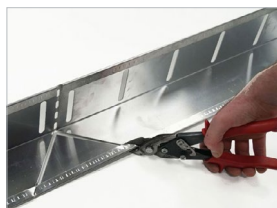
Corner pieces for retaining angle

Installation of the Retaining Angle is simple. All pieces are designed to be used also as corners as well as straight sections.

Start by setting out the corners. To form a corner, remove the centre 'V' piece with a pair of pliers. The two sections either side can now be bent together to form the corner, as required.

Once the corner sections have been put in place, working from the corners, the straight sections can be added using the interlocking male/female connections.

On reaching the centre of each run, the retainer can be cut to the length required by using an angle grinder or hacksaw. Additional straight/corner connectors for runs of less than 1.2m are available.



Axter Ltd reserves the right to modify and update this data at any time without prior notice. Only the latest version of this document is valid, available for download at www.axter.co.uk/downloads. Once downloaded, documents are uncontrolled. Users should always confirm they are referring to the latest version prior to use. Further assistance is available from Axter Ltd's Technical Support Team, email: technical@axterltd.co.uk, telephone: 01473 935008.

The intended use of this product should be verified with Axter Ltd prior to adoption to ensure its suitability and compliance with specifications, project requirements, industry regulations, legislation, good practice, installation techniques and all other relevant guidance. Axter Ltd accepts no liability for non-compliant use of this product.