

Product Data Sheet

PROTECTION BOARD

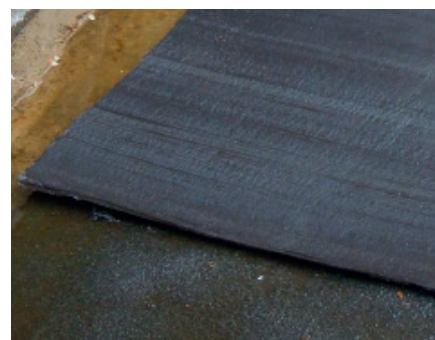
3mm or 6mm thick

Bituminous semi-flexible board used to protect delicate bitumen membranes from damage

Axter's Protection Board is designed to ensure adequate protection to waterproofing membranes against damage caused by site traffic, mechanical damage and ground settlement.

It is suitable for roofs, podium decks, basement tanking, waterways, tunnels and civil engineering projects. The Protection Board is also suitable for vertical applications as it can be heat bonded to concrete on the open side, providing good adhesion.

The Protection Board can be used as a permanent layer, part of the waterproofing system, or as temporary protection which is removed after passing trades have finished.



Advantages

- Excellent protection of the waterproofing membrane
- Superior impact and abrasion resistance
- Lightweight and easy to handle
- Can be cut, shaped and installed in a wide variety of applications and areas
- Tough and durable and can withstand concrete pour
- Rot-proof, will not delaminate even when immersed in water
- Bitumen content does not bleed out of the fibres
- Can be spot bonded, fixed with double-sided bitumen tape or heat bonded
- Sheets can be bonded together to form uniform layer and be held in vertical position

Physical & Mechanical Characteristics

Axter's Protection Board is made from a mixture of fibres saturated with at least 75% bitumen. It is covered one side with a polyethylene film, meaning it can be used on surfaces normally not compatible with bitumen. The film also prevents the bitumen from bleeding onto other surfaces and the sheets from sticking together in warmer weather when stored on a pallet.

Properties	Test Method	Units	Typical Values	
Thickness	EN 1849-1	mm	3.1	6.1
Dimensions	EN 1849-1	m	2 x 1m	2 x 1m
Mass per units area	EN 1849-1	Kg/m ²	4.09	8.34
Bitumen content			>75%	>75%
Softening point			115-130°C	115-130°C
Polythene film		μ	15	15
Resistance to static loading (Method A)	EN 12730	Kg	25	25
Resistance to impact	EN 12691	mm	>700	>700
Puncture resistance	ASTM E-154	N/mm	1474N / 37mm	1474N / 34mm
Watertightness to water	EN 1928-1	KPA		>400

Installation

The Protection Board is lightweight and is designed to be user friendly and easy to install. The bitumen content is held secure within the structure of the board and will not bleed out of the fibres. This reduces mess for both surrounding structures and personnel handling the product during installation.

The most effective installation method is to heat bond to the surface requiring protection. This gives a secure bond and complete coverage, with no risk of dust, stones or water passing behind the protection and potentially affecting the membrane. The board can also be spot bonded using adhesive or fixed with double sided bitumen tape.

Due to its flexibility, the Protection Board can be scored or cut with a sharp knife to fit around corners. Multiple layers can be fitted on top of one another to give extra protection on susceptible areas.

The board is tough and durable and can withstand concrete pour and shingle easily. The boards are rot-proof, will not delaminate even in water and are intended to provide long-term protection for waterproofing systems.

The manufacturer reserves the right without prior notice to modify the composition of these products. Characteristics provided in this publication derive from data obtained under controlled test conditions. Axter Ltd makes no warranties, express or implied, as to the properties and performance under any variations from such conditions in actual construction.