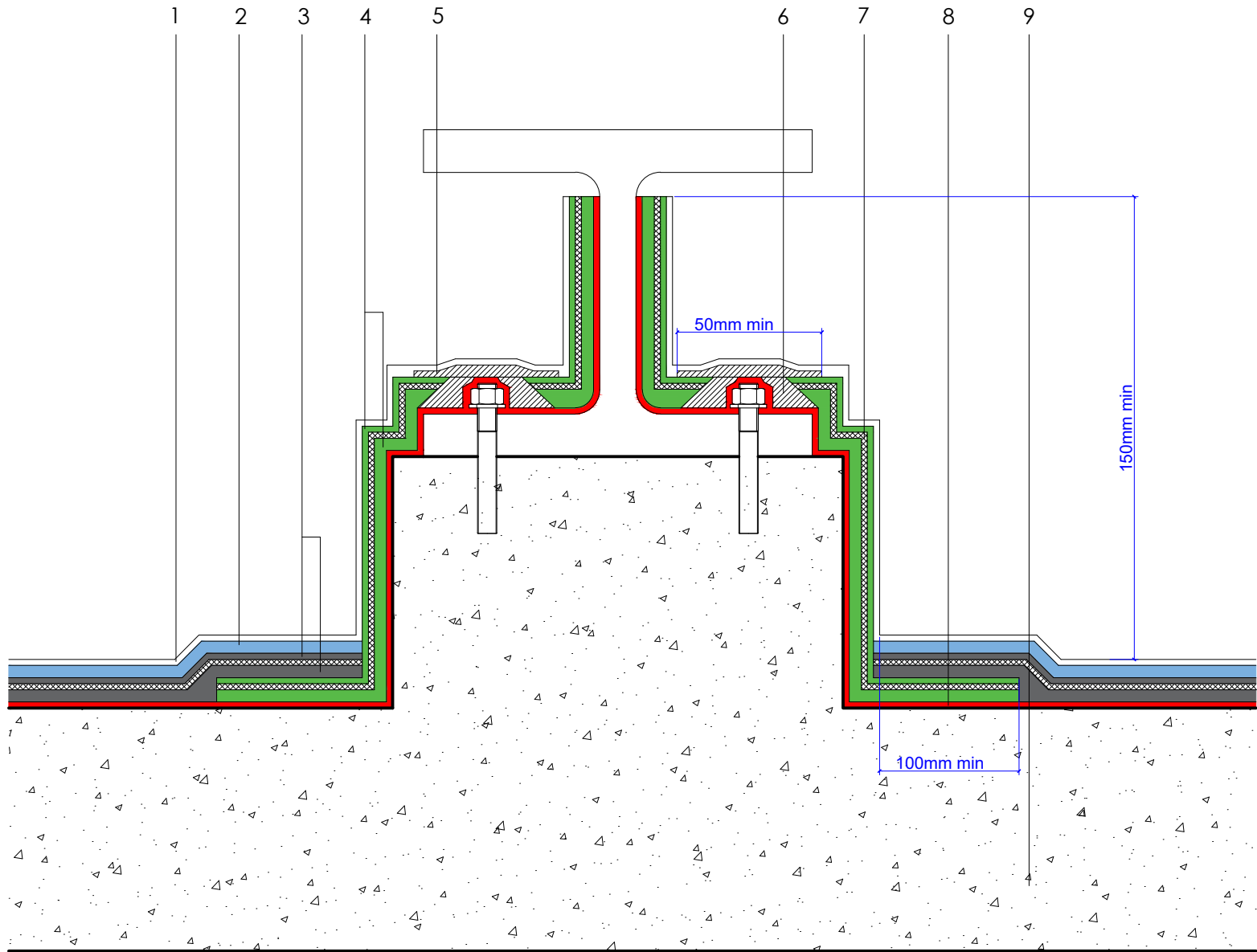


1	Starcoat PMMA [®] coloured or clear sealer (quartz aggregate or decorative chips optional)
2	Starcoat PMMA [®] self leveling mortar and aggregate
3	Starcoat PMMA [®] waterproofing
4	Starcoat PMMA [®] thix vertical waterproofing
5	Starcoat PMMA [®] reinforced filler to encapsulate fixing heads
6	Star cut fleece reinforcement around fixings and made good with Starcoat PMMA [®] filler
7	Starcoat PMMA [®] fleece reinforcement
8	Starcoat PMMA [®] primer (if required) - refer to project specific specification
9	Generic substrate - refer to project specific specification



Axter provide detail drawings as part of our technical design service. Such drawings should only be used as a guide during the design process and should not be utilised during construction. Axter accepts no liability for misuse of this service.

PROJECT : N/A
CLIENT : N/A
DRAWING : STARCOAT PMMA[®] TYPICAL PLINTH UPSTAND WITH SURFACE MOUNTED LOAD
DETAIL

DWG.No
SPMMA.0816.220

SCALE
1:5 @ A4

DATE
2019

REV (if applicable)
N/A

STANDARD DETAIL