

# Technical Data Sheet

## BALUSTRADE FIXING POINT WITH EXTENDED POST

For RBM and PVC

**The Axter Balustrade Fixing Point with Extended Post for RBM and PVC (BFP-EP-RBM/PVC) is designed for use on warm flat roof constructions where it is fixed directly to the supporting roof deck below the insulation providing a connection point for balustrade supports.**

### Installation

The BFP-EP-RBM/PVC comprises a 225mm x 375mm fixing plate with a steel upstand column that is manufactured to suit the insulation or roof build up. The fixing plate provides 8no holes through which the BFP-EP-RBM/PVC is bolted to the structure. To weather the fixing plate the BFP-EP-RBM/PVC is factory fitted with an appropriate flange material to enable it to be weathered or sealed to the main roof area. Above the membrane there are two stainless steel anchor points each with 2no M10 x 20 blind threaded connection points. A connection or weld plate can be supplied in mild steel or stainless steel for connecting the balustrade to the fitting.

### Design considerations

Max. loading values that the BFP-EP-RBM/PVC can be subject to are shown within the 'loading ratings' section. Their inclusion in any situation should be approved by the structural engineer. The BFP-EP-RBM/PVC should not be used in any situation where the product might become submerged to any extent.

### Typical uses

Connecting balustrade supports to a flat roof or parapet wall or any application where resistance to a turning moment is required.

### Compatibility - roof construction

The BFP-EP-RBM/PVC is designed for warm or inverted roof constructions on concrete or timber substrates.

**Compatibility - roof covering types**

The BFP-EP-RBM/PVC can be supplied with different flange materials to integrate with the following roofing systems:

- PVC roofing membrane
- EPDM roofing membrane
- TPO roofing membrane
- TPE roofing membrane
- PIB roofing membrane
- SBS and APP modified bitumen membranes
- Liquid applied roof coatings

MATERIALS	
304 stainless steel anchor point	Machined finish
Mild steel fixing plate	Polyester powder coat or galvanised finish
Weathering flange	Material to match main roof weathering system
Optional balustrade connection plate	Mild steel or stainless steel
Thermal break	5mm HDPE*
Internal insulation	PIR*
DIMENSIONS	
OA height from roof deck manufactured to suit insulation thickness	
2 no fixing points	M10 x 20
Distance between fixing points	52mm
Distance between anchors	150mm
Fixing plate	225mm x 375mm x 6mm
Fixing holes	8no 15mm Ø holes
Max. height	800mm (warm and inverted roofs) 200mm (vertical elevations)
Flange sizes	500mm x 650mm

\*Warm and inverted roofs only.

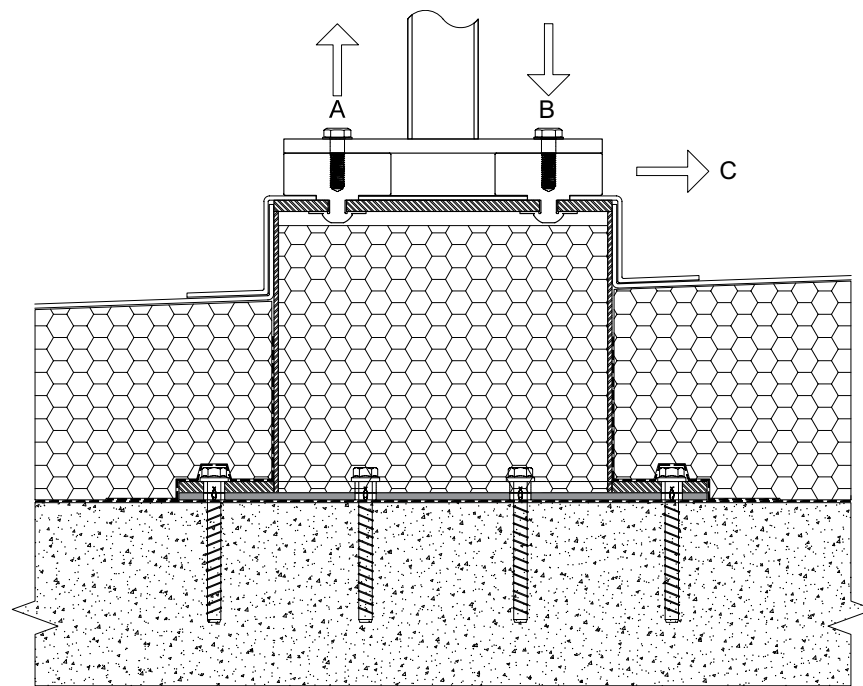
**Universal Fixing Point with Extended Post for RBM/PVC - Warm roof****Installation**

The Axter BFP-EP-RBM/PVC is ideally installed to a flat, level structural surface, prior to the installation of the main waterproofing system. It is the designers / installers responsibility to ensure that the substrate has the structural capacity to sustain the loads imposed by the balustrade system.

The BFP-EP-RBM/PVC units should be fixed to the substrate with suitable fixings, which may need to be agreed by a structural engineer. All 8no. fixings should be utilised.

Once installed, the waterproofing system should be fitted around the Axter BFP-EP-RBM/PVC units taking care to seal the air and vapour control layer (AVCL) to around the post. Insulation should be tightly fitted to the upstand post and should not in any circumstances be less than 10mm below the top of the upstand post - please see detail attached. The waterproofing system should be dressed around the post and where necessary will need to extend up the upstand post where it rises above the insulation. The factory fitted membrane flange should be dressed down and sealed to the field roof membrane in accordance with standard procedures associated to that specific membrane or as directed by the membrane manufacturer. It is the installer's responsibility to ensure that a waterproof seal is achieved at the lap joint.

M10 bolts of a suitable length can be used to secure the balustrade system to the BFP-EP-RBM/PVC. A suitable connection bracket or plate may be required. The bolts should be installed with a suitable thread locking adhesive or locking washer to stop potential loosening over time. M10 bolts to the top of the BFP-EP-RBM/PVC should be tightened to 57.3Nm.



Loading diagram

### Maximum load ratings

The following values assume that the supporting structure is of adequate stability to support the design values that will be imposed on the BFP-EP-RBM/PVC.

All designs and calculations should take into account the supporting structure and balustrade construction to be compliant with current regulation requirements.

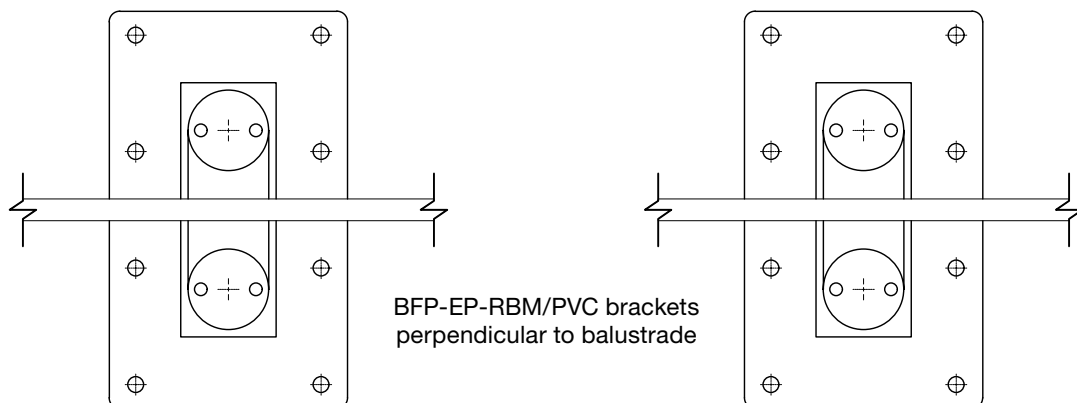
Max. height of BFP-EP-RBM/PVC upstand - 800mm

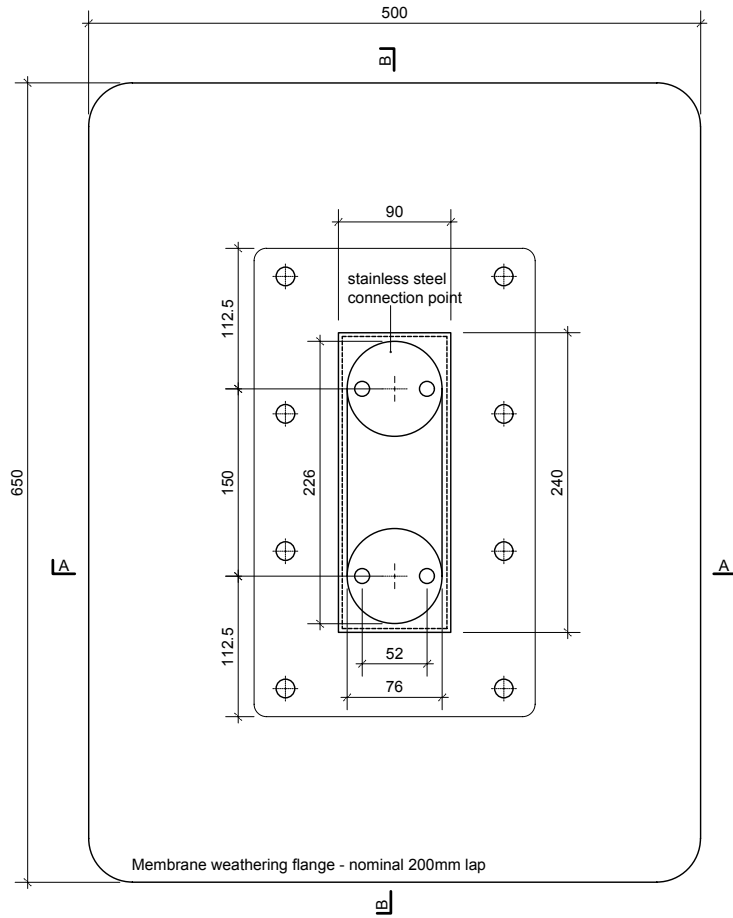
### Maximum serviceable limit state (SLS) axial loads to the BFP-EP-RBM/PVC

At 'A' 25kN (SLS)

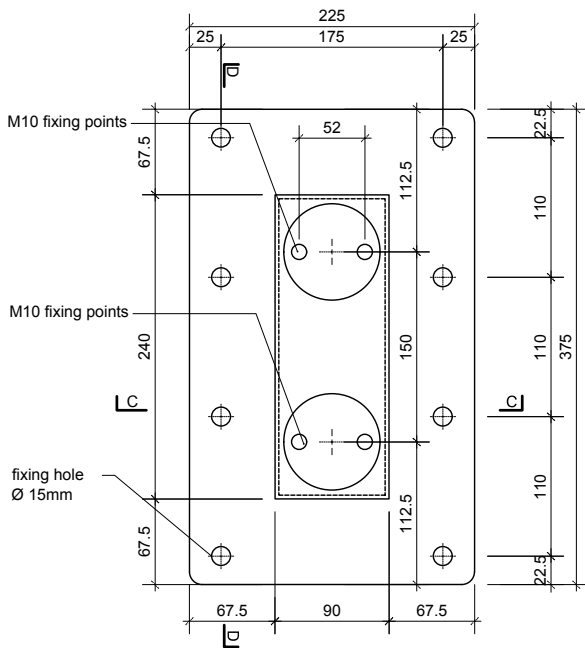
At 'B' 25kN (SLS)

At 'C' 2.5kN (SLS)

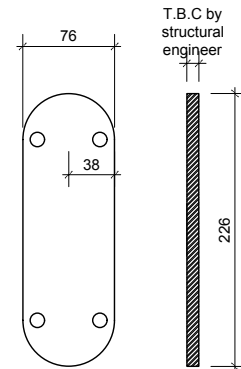




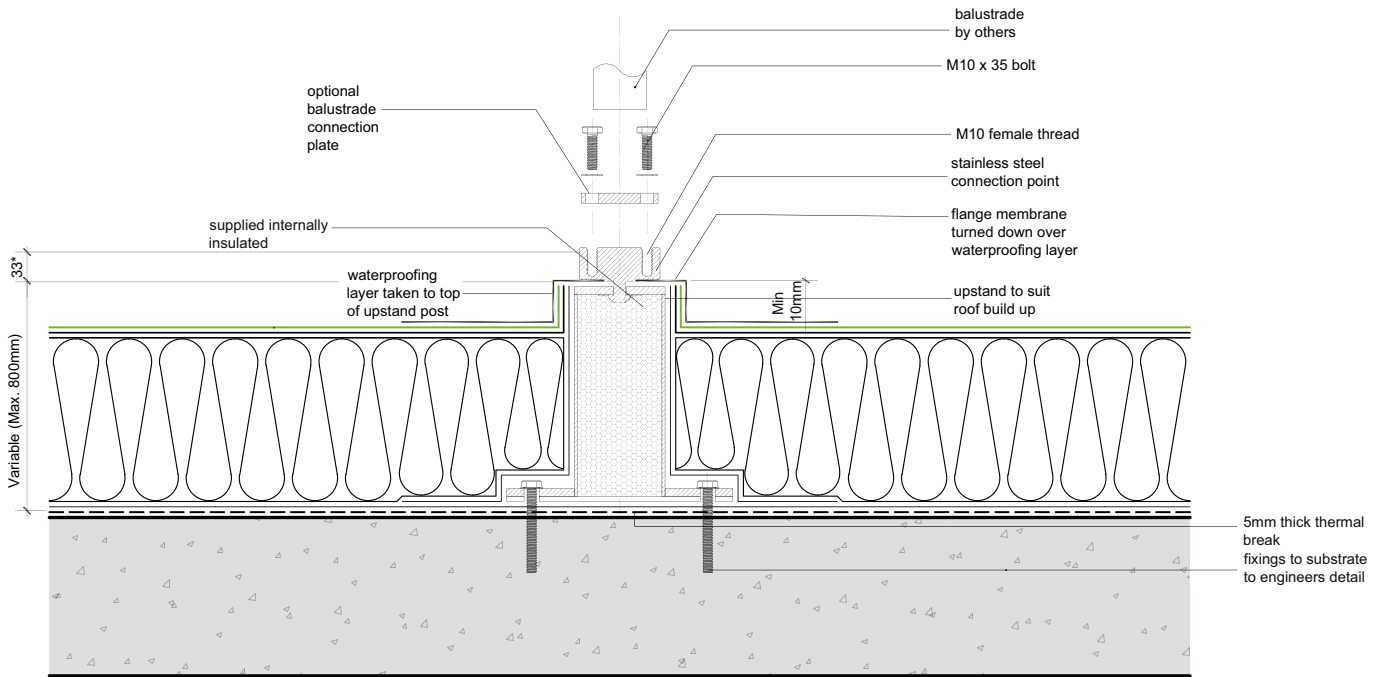
ROOF - PLAN VIEW



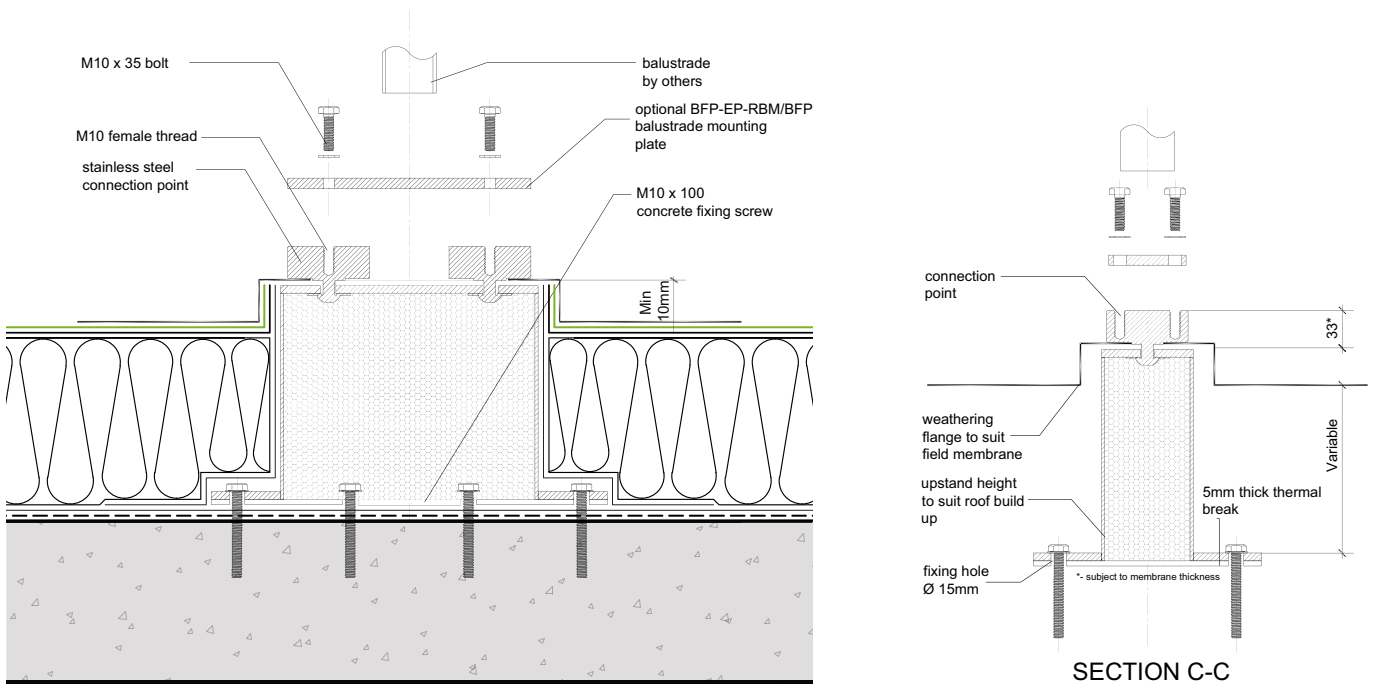
FIXING PLATE - MEMBRANE NOT SHOWN  
PLAN VIEW OF FIXING PLATE



OPTIONAL  
CONNECTION PLATE  
DETAILS

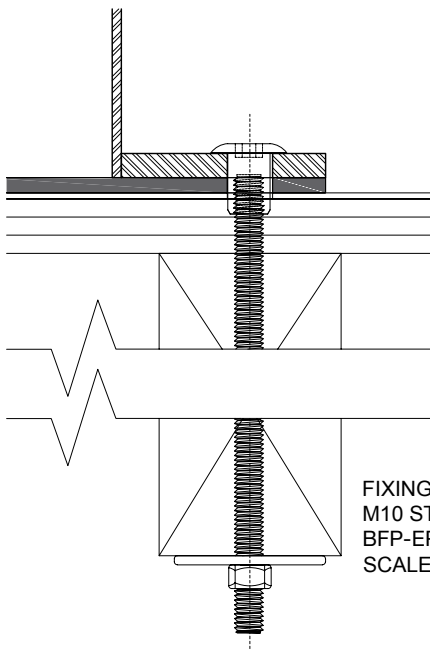


WARM ROOF - SECTION A-A

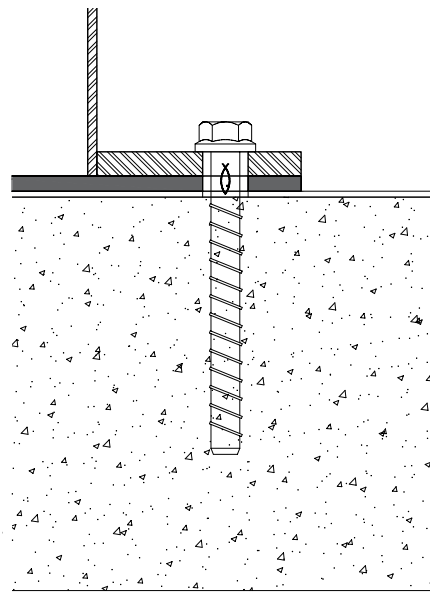


WARM ROOF - SECTION B-B

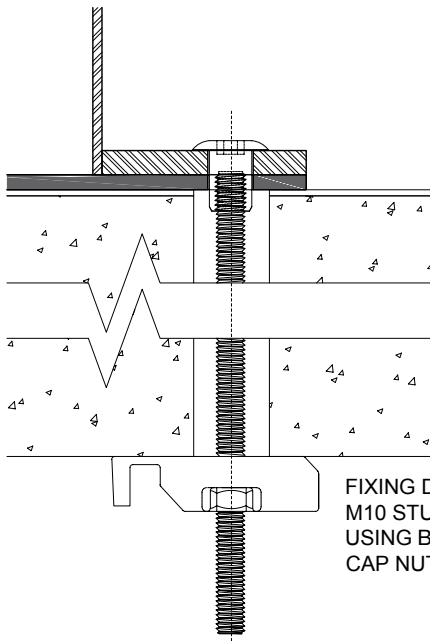
SECTION C-C



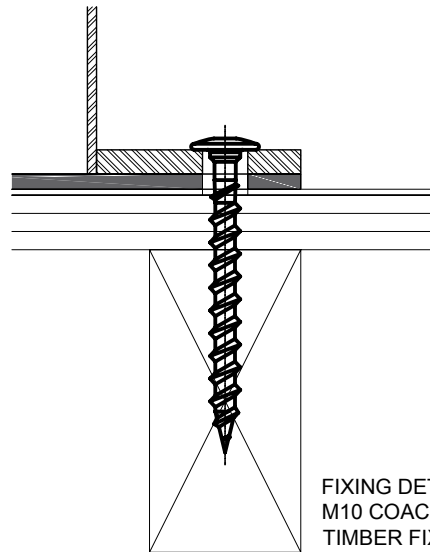
FIXING DETAIL 1  
M10 STUD FOR BOLTING USING  
BFP-EP-RBM/PVC CAP NUT  
SCALE 1:2.5



FIXING DETAIL 2  
CONCRETE FIXING  
SCREW  
SCALE 1:2.5



FIXING DETAIL 3  
M10 STUD FOR BOLTING  
USING BFP-EP-RBM/PVC  
CAP NUT & TOGGLE SCALE 1:2.5



FIXING DETAIL 4  
M10 COACH SCREW  
TIMBER FIXING  
SCALE 1:2.5

## Universal Fixing Point with Extended Post for RBM/PVC - Inverted roof

### Installation

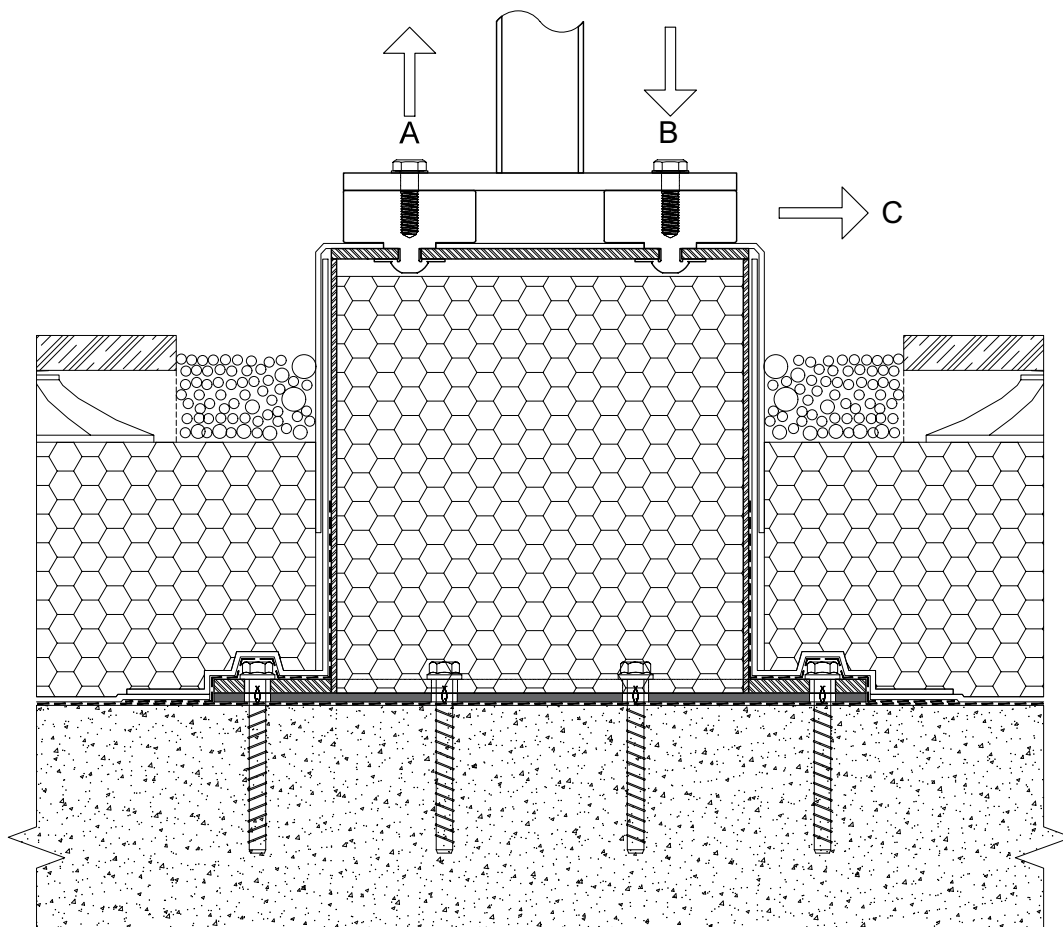
The Axter BFP-EP-RBM/PVC is ideally installed to a flat, horizontal structural surface, prior to the installation of the main waterproofing system. It is the designers / installers responsibility to ensure that the substrate has the structural capacity to sustain the loads imposed by the balustrade system.

The BFP-EP-RBM/PVC units should be fixed to the substrate with suitable fixings, which may need to be agreed by a structural engineer. All 8no. fixings should be utilised.

Once installed, the waterproofing system should be fitted around the Axter BFP-EP-RBM/PVC units taking care to seal the AVCL to around the post. The waterproofing system should be taken up the BFP-EP-RBM/PVC post to the top of the steel section. The factory fitted membrane flange should be dressed down and sealed to the field roof membrane in accordance with standard procedures associated to that specific membrane or as directed by the membrane manufacturer. It is the installer's responsibility to ensure that a waterproof seal is achieved at the lap joint. Insulation should be tightly fitted to the upstand post.

The finished roof surface should not in any circumstances be less than 50mm below the top of the upstand post - please see detail attached.

M10 bolts of a suitable length can be used to secure the balustrade system to the BFP-EP-RBM/PVC. A suitable connection bracket or plate may be required. The bolts should be installed with a suitable thread locking adhesive or locking washer to stop potential loosening over time. M10 bolts to the top of the BFP-EP-RBM/PVC should be tightened to 57.3Nm.



Loading diagram

**Maximum load ratings**

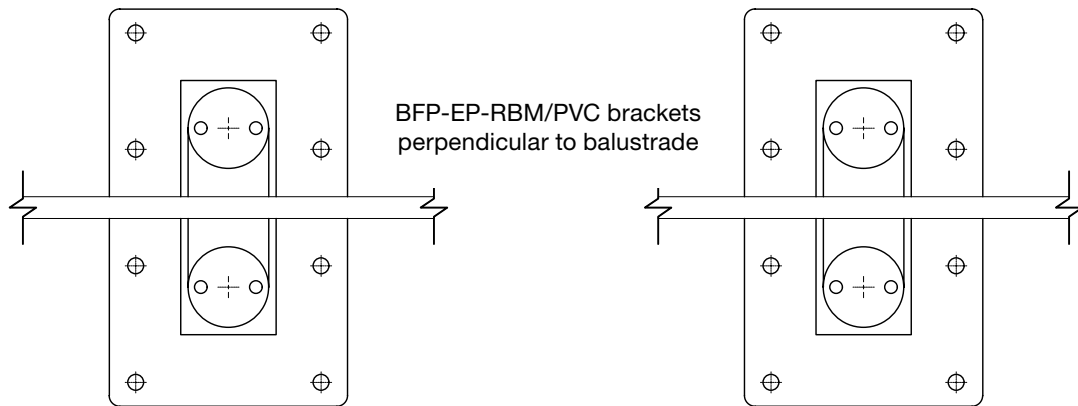
The following values assume that the supporting structure is of adequate stability to support the design values that will be imposed on the BFP-EP-RBM/PVC.

All designs and calculations should take into account the supporting structure and balustrade construction to be compliant with current regulation requirements.

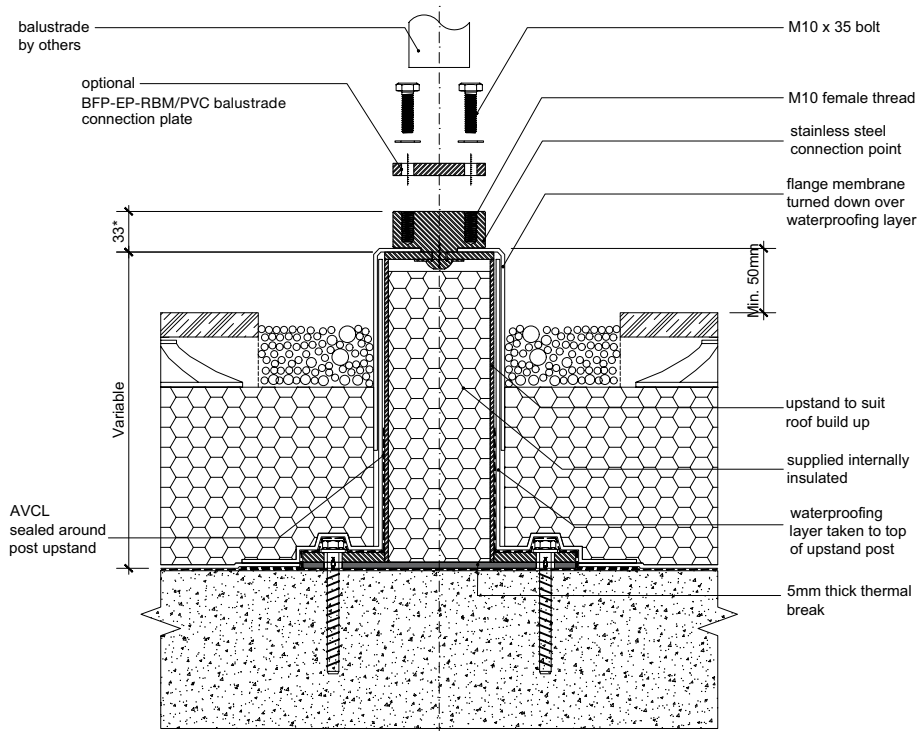
Max. height of BFP-EP-RBM/PVC upstand - 800mm

**Maximum serviceable limit state (SLS) axial loads to the BFP-EP-RBM/PVC**

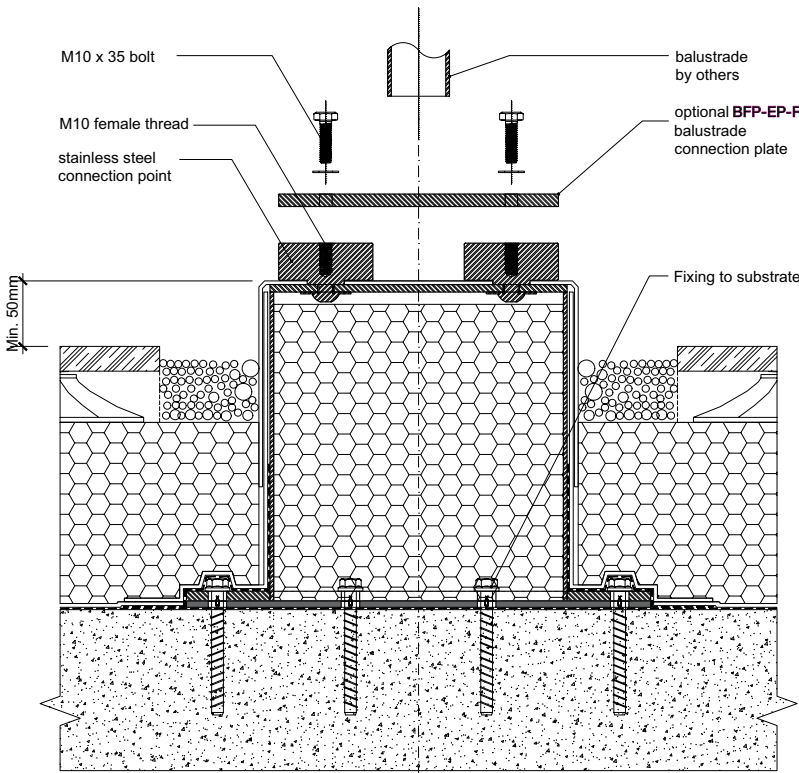
At 'A'	25kN (SLS)
At 'B'	25kN (SLS)
At 'C'	2.5kN (SLS)



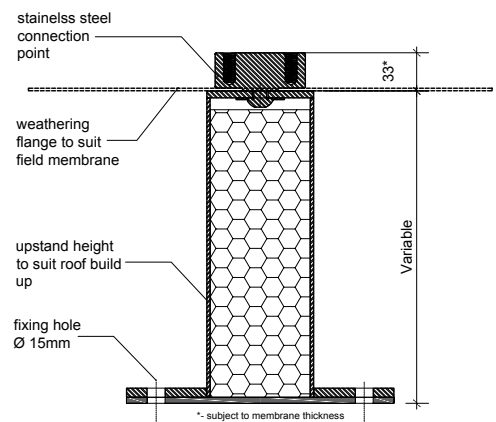




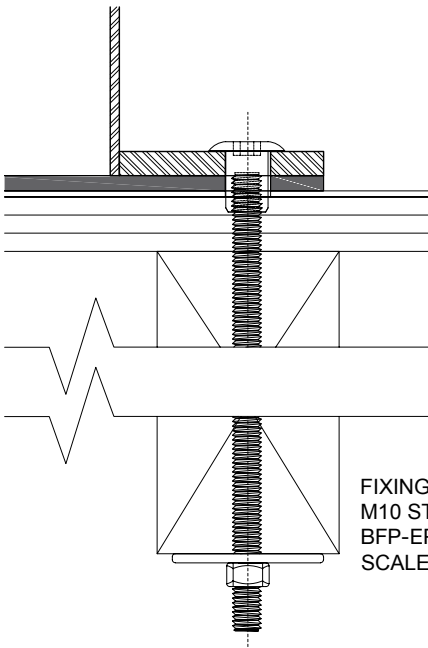
INVERTED ROOF - SECTION A-A



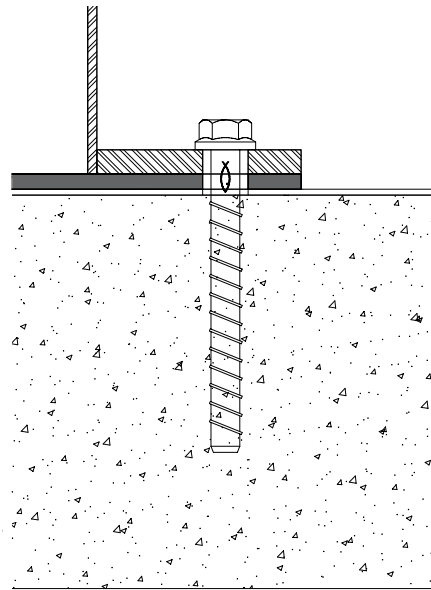
INVERTED ROOF - SECTION B-B



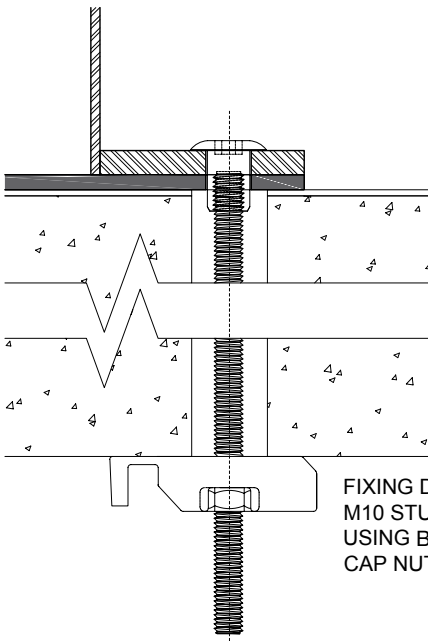
SECTION C-C



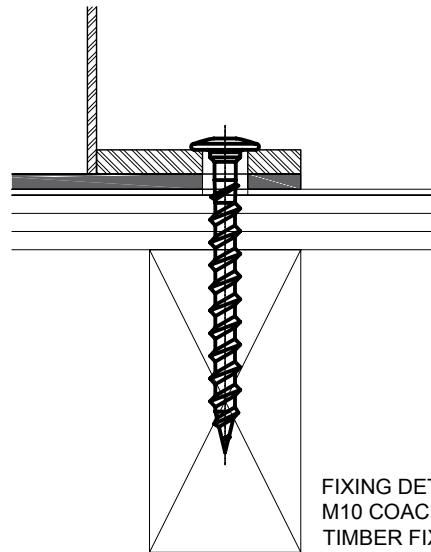
FIXING DETAIL 1  
M10 STUD FOR BOLTING USING  
BFP-EP-RBM/PVC CAP NUT  
SCALE 1:2.5



FIXING DETAIL 2  
CONCRETE FIXING  
SCREW  
SCALE 1:2.5



FIXING DETAIL 3  
M10 STUD FOR BOLTING  
USING BFP-EP-RBM/PVC  
CAP NUT & TOGGLE SCALE 1:2.5



FIXING DETAIL 4  
M10 COACH SCREW  
TIMBER FIXING  
SCALE 1:2.5

## Universal Fixing Point with Extended Post for RBM/PVC - Vertical

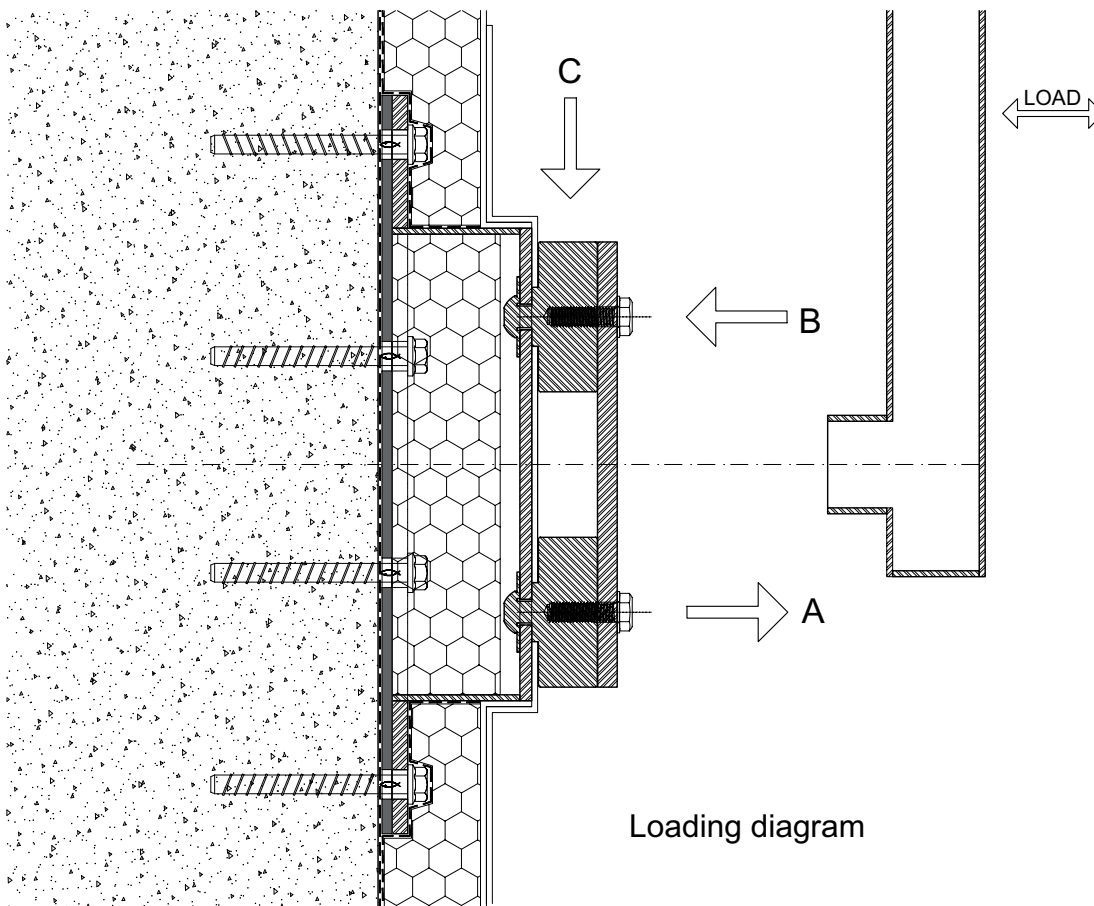
### Installation

The Axter BFP-EP-RBM/PVC is ideally installed to a flat, vertical structural surface, prior to the installation of the main waterproofing system. It is the designers / installers responsibility to ensure that the substrate has the structural capacity to sustain the loads imposed by the balustrade system.

The BFP-EP-RBM/PVC units should be fixed to the substrate with suitable fixings, which may need to be agreed by a structural engineer. All 8no. fixings should be utilised.

Once installed, the waterproofing system should be fitted around the Axter BFP-EP-RBM/PVC units taking care to seal the AVCL to around the post. Insulation should be tightly fitted to the upstand post and should not in any circumstances be less than 10mm below the top of the upstand post - please see detail attached. The waterproofing system should be dressed around the post and where necessary will need to extend up the upstand post where it rises above the insulation. The factory fitted membrane flange should be dressed down and sealed to the field roof membrane in accordance with standard procedures associated to that specific membrane or as directed by the membrane manufacturer. It is the installer's responsibility to ensure that a waterproof seal is achieved at the lap joint.

M10 bolts of a suitable length can be used to secure the balustrade system to the BFP-EP-RBM/PVC. A suitable connection bracket or plate may be required. The bolts should be installed with a suitable thread locking adhesive or locking washer to stop potential loosening over time. M10 bolts to the top of the BFP-EP-RBM/PVC should be tightened to 57.3Nm.



### Maximum load ratings

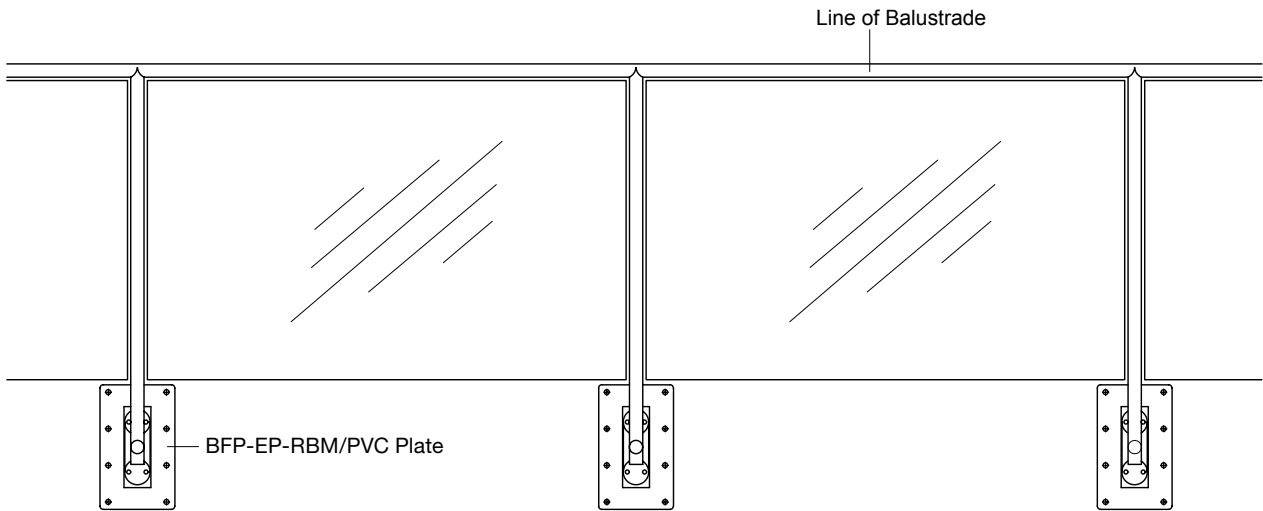
The following values assume that the supporting structure is of adequate stability to support the design values that will be imposed on the BFP-EP-RBM/PVC.

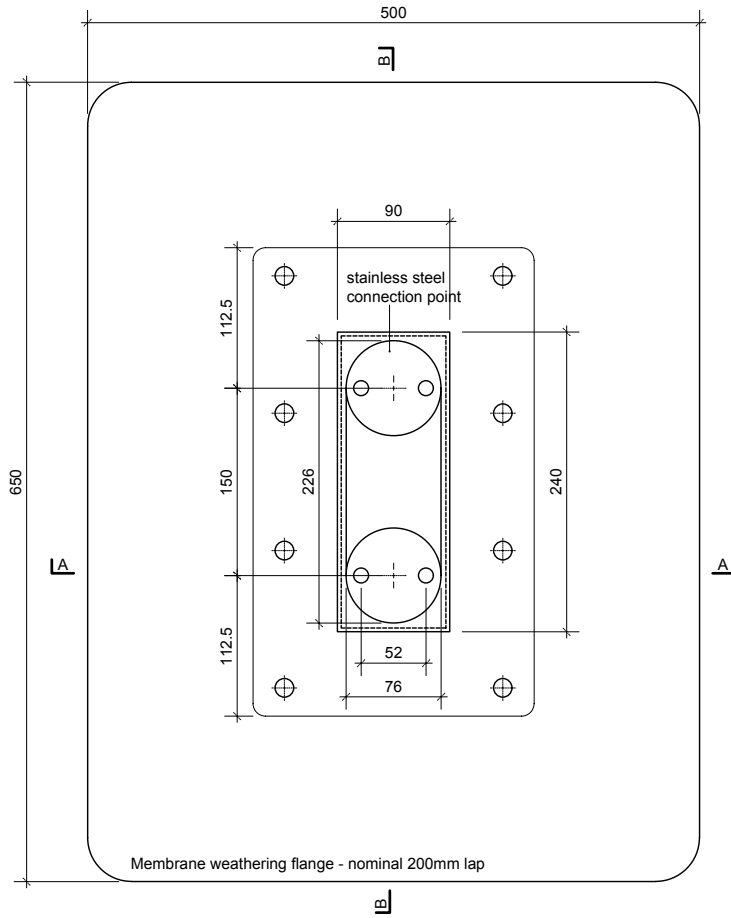
All designs and calculations should take into account the supporting structure and balustrade construction to be compliant with current regulation requirements.

Max. height of BFP-EP-RBM/PVC upstand - 800mm

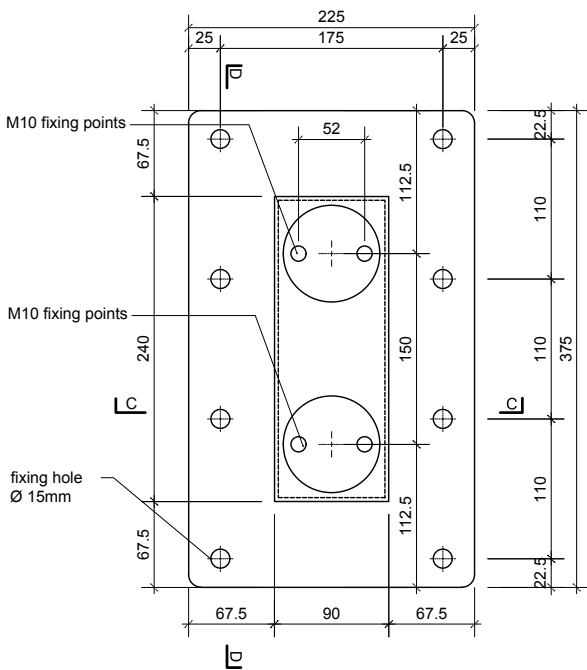
**Maximum serviceable limit state (SLS) axial loads to the BFP-EP-RBM/PVC**

At 'A'	25kN (SLS)
At 'B'	25kN (SLS)
At 'C'	2.5kN (SLS)

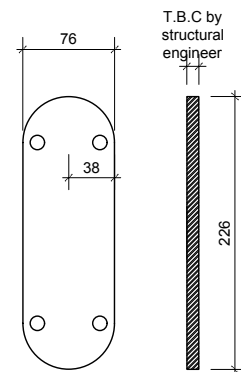




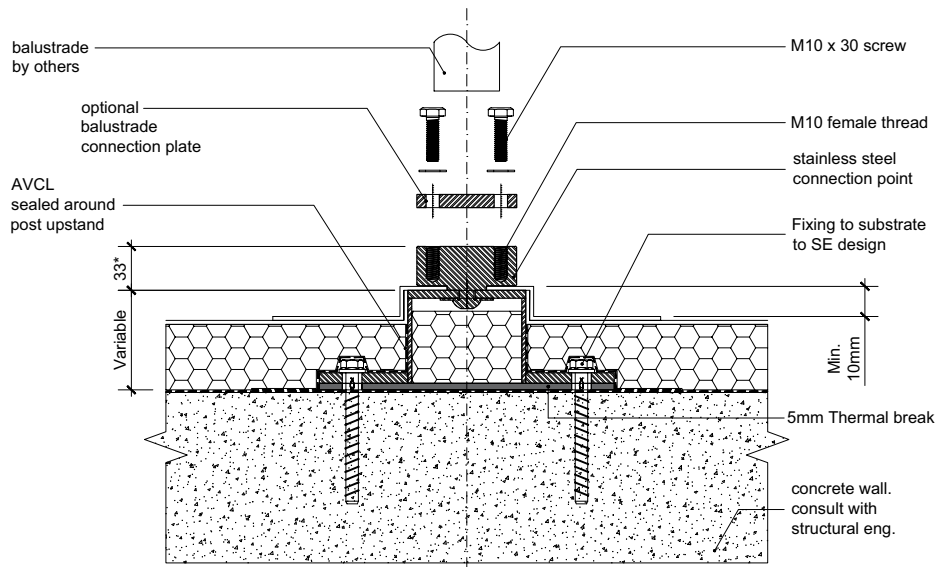
PARAPET WALL - FACE VIEW



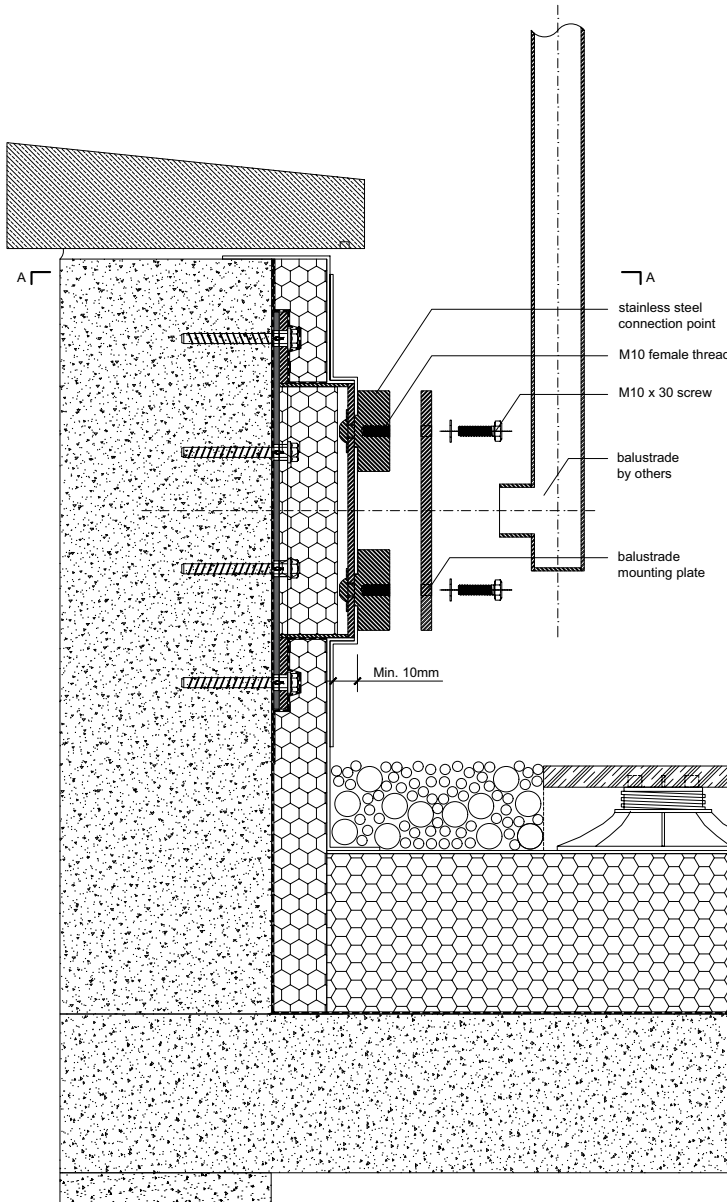
FIXING PLATE - MEMBRANE NOT SHOWN  
PLAN VIEW OF FIXING PLATE



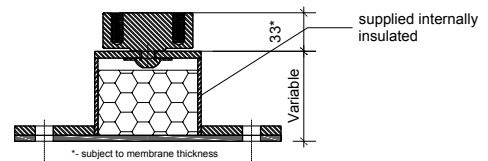
OPTIONAL  
CONNECTION PLATE  
DETAILS



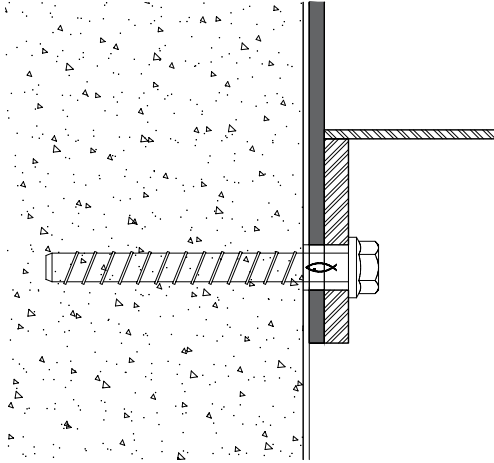
PARAPET WALL - FIXING DETAIL- SECTION A-A



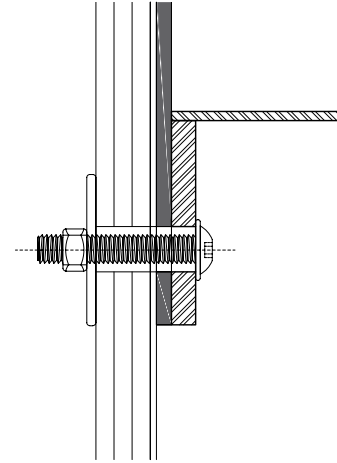
PARAPET WALL - FIXING DETAIL - SECTION B-B



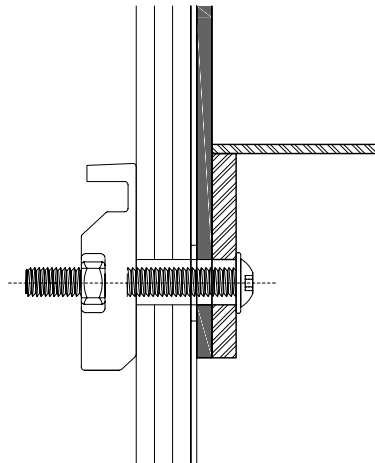
SECTION C-C



FIXING DETAIL 1  
CONCRETE FIXING SCREW  
SCALE 1:2.5



FIXING DETAIL 2  
SB BOLT & SQ PLATE  
WASHER THROUGH PLY  
SCALE 1:2.5



FIXING DETAIL 3  
TOGGLE THROUGH PLY  
SCALE 1:2.5

Axter Ltd reserves the right to modify and update this data at any time without prior notice. Only the latest version of this document is valid, available for download at [www.axter.co.uk/downloads](http://www.axter.co.uk/downloads). Once downloaded, documents are uncontrolled. Users should always confirm they are referring to the latest version prior to use. Further assistance is available from Axter Ltd's Technical Support Team, email: [technical@axterltd.co.uk](mailto:technical@axterltd.co.uk), telephone: 01473 935008.

The intended use of this product should be verified with Axter Ltd prior to adoption to ensure its suitability and compliance with specifications, project requirements, industry regulations, legislation, good practice, installation techniques and all other relevant guidance. Axter Ltd accepts no liability for non-compliant use of this product.