

Technical Data Sheet

HYDOME PASS CONCERTINA LADDER

Hydome Pass Concertina Ladder

The Hydome Pass Concertina Ladder is a heavy duty, retractable, industrial stairway which can support a load of 200kg per tread and 500kg/m². Manufactured to DIN EN 14975 (DIN 4570) and designed to all industrial site requirements.

Features:

- Fully counterbalanced, self-supporting operation.
- Telescopic handrail.
- Non-slip treads.
- 4 stock sizes up to 3400mm.
- Die cast aluminium construction.
- Standard treads 350/300 x 140mm.



The ladder is attached to a 19mm thick wooden backboard, 600mm wide x 200mm deep, for fitting to the structural vertical surface.

The ladder is supplied with two heavy-duty counter-balanced springs (item 7), incorporated into pivot brackets to ensure that the ladder can be raised and lowered with minimum effort.

The maximum fixing height from the floor to underside of the backboard is 3390mm. Selection of the correct ladder for the floor level to fixing height is determined as follows:

- Ladder supplied with 9 treads, 350mm wide x 140mm deep, to suit a floor to underside of the backboard height of 2250–2500mm.
- Ladder supplied with 10 treads, 350mm wide x 140mm deep, to suit a floor to underside of the backboard height of 2501–2790mm.
- Ladder supplied with 11 treads, 350mm wide x 140mm deep, to suit a floor to underside of the backboard height of 2791–3090mm.
- Ladder supplied with 12 treads, 300mm wide x 140mm deep, to suit a floor to underside of the backboard height of 3091–3390mm.

Installation:

- The ladder must be fitted in the closed position.
- First, check that the correct ladder has been received to suit the actual floor to fitting height as detailed above.
- There are no pre-drilled holes in the backboard. A minimum of 8 screws, Ø8mm x 80mm long, complete with Ø9mm washers are recommended.
- Screws are not included, correct screws/fixings should be used depending on the actual surface the ladder is being fitted to.
- The ladder backboard should be fixed to a solid structural material.
- A spacer the same size as the backboard (200mm high x 600mm wide and a min. of 50mm deep) needs to be positioned between the vertical structural surface and the backboard. The spacer is not supplied with the ladder.
- Once ladder is correctly fitted, it can be lowered to the floor surface.
- Minimum angle for touch-down point is 15 degrees. To adjust angle, extend the ladder to the desired point. Slacken the lock nut and turn adjustment bolt until it stops. Tighten the lock nut and the ladder will be set to this desired touch-down point.
- Check all treads are horizontal to the floor.
- To adjust treads: slacken the two nuts on the underside of each tread. Reset to horizontal.
- The ladder is supplied with factory-set correct spring tension. Any spring tension adjustments should be carried out by a suitably qualified maintenance engineer with the ladder in the closed position.
- It is important that a 10mm x 300mm long steel bar is used in the locating holes of the die-cast spring roller.
- To increase the tension, place the steel bar in the hole next to the domed headed stud and rotate until the stud can be removed. Rotate the spring roller until it is possible to place the stud into the next hole adjacent to where the stud was removed. Once it is safely in position, allow the roller to rotate slowly back so that the stud is back against the bracket and remove the steel bar as the springs are under high tension.
- Extreme caution must be taken when carrying out any adjustment. The correct steel bar must be used.

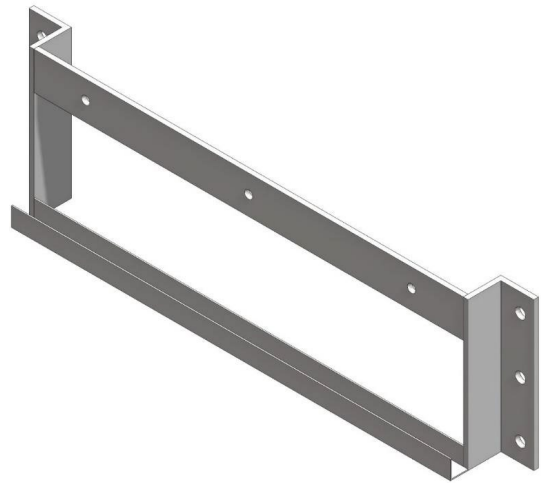
Hydome Pass Ladder – Wall Mounting Bracket

Product description

When a Hydome Pass Ladder is fixed to a vertical surface, a 50mm packer is required. This can be simply provided with a wall fixing bracket including a support channel which securely fits the ladder backboard and allows the unit to be simply bolted in place.

Specific features

- Material: Aluminium extrusion.
- 14mm Holes for M10–M12 Fixings.
- PPC Finish: White.



Hydome Pass Ladder – Extra Treads

Product description

Where a Hydome Pass Ladder is to be installed to a vertical face and site constraints mean there will be a residual step from the top tread to the step off point, additional, wall mounted treads may be fitted.

Specific features

- Construction: 4mm folded aluminium.
- Non-slip GRP top face.
- 8.5mm fixing holes for M8 fixing.

Fixings are included and these must always be suitable for the structure to which they will be fitted.

Any additional treads must be installed to a structure capable of withstanding the loads imposed.

Extra treads should be positioned centrally to the installed staircase and care must be taken to ensure the stairway does not clash with the treads when folded into the stored position.

Care must be taken when installing the wall mounted treads to ensure the spacing is even and consistent with the rise of the staircase (typically 230-240mm) it is our recommendation the rise of the treads does not exceed 250mm. We would always recommend a tread is fitted as close as possible to the step off point. In addition to the points made in this document it is imperative that the following rules are followed:

Safe installation:

- Treads and ladder must only be installed by trained, competent people.
- All installations should be carried out following detailed, site specific method statements and risk assessments.
- Treads and ladder should be installed using suitable, safe access equipment specific to the environment where the ladder is being installed and users carrying out the installation.
- Consideration must be given to the manual handling required in the installation of the treads and ladder.

Axter Ltd reserves the right to modify and update this data at any time without prior notice. Only the latest version of this document is valid, available for download at www.axter.co.uk/downloads. Once downloaded, documents are uncontrolled. Users should always confirm they are referring to the latest version prior to use. Further assistance is available from Axter Ltd's Technical Support Team, email: technical@axterltd.co.uk, telephone: 01473 935008.

The intended use of this product should be verified with Axter Ltd prior to adoption to ensure its suitability and compliance with specifications, project requirements, industry regulations, legislation, good practice, installation techniques and all other relevant guidance. Axter Ltd accepts no liability for non-compliant use of this product.